

LYLESTER RANCH LLC
FALL FEMALE SALE
September 29, 2020 • 6 pm CST

Hosted by:





LYLESTER RANCH LLC



355 W. Stagecoach Road | Martell, NE 68404
(Hwy 77 South and Stage Coach Road and 1 mile West)
Dan & Patricia Vergith • 702-499-0783 • pvergith@lylesterranch.com
Brandon Snider, Ranch Manager • 402-432-2541

Welcome Angus Friends,

We have all had to change many things in our daily lives and as a result many of our business activities have had to be adjusted as well. For health, safety as well as travel matters, Patricia and I have decided to change our Annual Lylester Ranch Fall Angus female sale to a an online sale to be hosted by CCI.Live on September 29, at 6 pm CST. The sale book and videos are posted online and can be viewed on angus.org, CCI.Live and cotton-associates.com.

We are proud of the mostly young set of Angus females we are offering this year. They are a select group from the heart of our program! We have been particularly selective in prioritizing females with excellent eye-appeal but also individuals that meet many of the important traits demanded in the business.

We thank our family and employees for their patience, hard work and support. For more information on the cattle selling, feel free to contact myself, Brandon Snider or any of the Cotton & Associates crew or the Cotton crew if you have any questions.

Thanks, Dan & Patricia



Kaden Volkman, Brandon Snider, Logan Bohlke, Dan and Patricia Vergith, Jake Robertson, Spencer Barkdoll



Mechelle Vergith and Logan Bohlke



Logan Bohlke



Brandon, Renee, Mason and Cole Snider



Brandon, Rachel and Asher Frazier



Asher Frazier



Megan Vergith



LYLESTER RANCH LLC

FALL FEMALE SALE

September 29, 2020 • 6 pm CST

AUCTIONEER:

Steve Dorran 760-972-7736

HERD HEALTH:

Cattle will be accompanied with proper health certificates for immediate shipment. An updated breeding and calving report will be available sale day and announcements from the auction block will take precedence over all printed material.

PREGNANCY EXAMINATION INFO:

All cattle have been pregnancy checked by a competent veterinarian and are called safe to the AI or pasture date as can be best determined by advance palpation or ultrasound. In respect to AI dates, they are not unconditionally guaranteed other than the fact that they are pregnant.

TERMS AND CONDITIONS:

Cattle will sell under the suggested Terms and Conditions of the American Angus Association (http://www.angus.org/Pub/suggested_sale_terms.pdf). All announcements from the auction block take precedence over printed materials.

SALE MANAGED BY:



LARRY COTTON	517-294-0777
RYAN COTTON	706-206-8361
MIKE GOTHARD	540-894-1055
JERRY CRENSHAW	703-244-4767
ZACK HILEMAN	540-460-2776

www.cotton-associates.com

SALE CONSULTANT:

Matt Myers at 405-315-7258

TRUCKING:

Cattle will be picked up and or remain at the owners farm/ranch until trucking arrangements can be made or pickup arranged.

SALE SETTLEMENT:

All cattle are to be settled for prior to shipping out unless prior arrangement has been made with the manager/owner of the sale lot. Terms are cash or check.

VIDEOS OF THE SALE OFFERING WILL BE AVAILABLE

www.cotton-associates.com



CCI.live
Bid Live Online

(516) 366-0734 CCI.live schedule@cci.live

"Gavel's Down, The Best!"

LE

Blackbird 559

LE



Adam Moss

Lylelester Ranch Sale hosted by





1 Lylester Blackbird 559

Birth Date: 5-27-2020 Cow #*19755895 Tattoo: 559

Poss Maverick #*Basin Payweight 1682
*18962396 Poss Pride 5163 #*Basin Payweight 006S
21AR O Lass 7017
+*Poss Hoover Dam 2509
+Poss Pride 9526

Vintage Blackbird #*VAR Discovery 2240
*18745204 +*Sandpoint Blackbird 8809 #*AAR Ten X 7008 SA
+*Deer Valley Rita 0308
+*Connealy Onward
+Riverbend Blackbird 4301

CED	BW	WW	YW	RADG	DMI	YH	SC	DOC									
+8	+2.5	+84	+155	+36	+1.43	+1.0	+1.33	+29									
HP	CEM	MILK	MW	MH	CW	MARB	RE	FAT									
+9.3	+8	+32	+126	+9	+76	+78	+1.15	-.051									
\$M	+48	\$W	+85	\$F	+125	\$G	+70	\$B	+196	\$C	+302						
CED	BW	WW	YW	DMI	YH	SC	DOC	HP	CEM	MILK	MW	MH	CW	MB	REA	FAT	TEND
38	66	16	2	83	25	35	11	77	45	29	7	18	7	33	2	2	19

NON-PARENT FEMALES

Top 1% \$B	Top 1% RADG	Top 2% \$W	Top 10% \$G	Top 20% SC
Top 1% \$F	Top 1% WW	Top 2% Fat	Top 10% MH	Top 25% Marb
Top 1% CWT	Top 1% YW	Top 2% REA	Top 10% Milk	
Top 1% MCW	Top 2% \$C	Top 5% Doc	Top 10% YH	

- Blackbird 559 is an exciting prospect to lead-off the Lylester Ranch LiveOnline sale and she is a direct daughter of the \$215,000 selection of Lylester as the Foundation Heifer at the 2018 National Western, Blackbird 7184 sired by the popular Maverick.
- The dam of Lot 1 is a direct daughter of the \$5.5 million producer in the Vintage Angus Ranch and Herbster Angus donor, Blackbird 8809 sired by the \$110,000 longtime featured female sire in the 44 Farms and Vintage Angus programs, Discovery. Full sisters to the dam of Lot 1 include: Blackbird 7203, the \$280,000 valued half interest selection of Herbster Angus as the top-valued open heifer of the 2017 Vintage Angus Sale; and Blackbird 7228, the \$250,000 top-selling bred heifer of the 2018 Vintage Angus Sale selected by Rooney Angus Ranch.
- Maternal siblings to the foundation Lylester Blackbird and dam of Lot 1 include: Power Play 7018, the \$730,000 record-selling Vintage Angus Ranch sire selling to Rooney Angus Ranch; Blackbird 7204, the \$400,000 valued half interest selection of Optum Angus; Blackbird 7480, the \$250,000 top-selling open heifer of the 2018 Vintage Angus Ranch Sale selected by Riverbend Ranch; Blackbird 7260, the \$200,000 Riverbend Ranch selection as the top-selling female of the 2017 Vintage Angus Ranch Sale; Blackbird 5415, the \$260,000 valued half interest selection as the lead-off female of the record-setting 2016 Vintage Angus Sale selected by Spruce Mountain Ranch and Black Gold Genetics; and Blackbird 2318, the \$220,000 valued Spruce Mountain Ranch and Express Ranches now-deceased donor who has produced well over \$1 million in progeny sales.
- Will sell with Angus Registered Recip #18201654.



Vintage Blackbird 7184 / The dam of Lot 1.

LE

Rita 415

LE



Adam Moss

Lylelester Ranch Sale hosted by





2 Lylester Rita 415

Birth Date: 8-14-2019

Cow *19590862

Tattoo: 415

GAR Inertia
*18636043

*GAR Momentum

+*GAR Prophet 2984

#+*GAR Progress
+GAR Big Eye 1770
#+*GAR Prophet
*GAR Daybreak 1521

Deer Valley Rita 6289
+*18555890

*VAR Generation 2100

+*EF Rita 3244

#*Connealy Consensus 7229
+*Sandpoint Blackbird 8809
#+*Rito 9Q13 of Rita 5F56 GHM
+*C5 Ms Rita 9047

CED	BW	WW	YW	RADG	DMI	YH	SC	DOC
+11	+9	+67	+121	+26	+89	+3	+1.34	+25
HP	CEM	MILK	MW	MH	CW	MARB	RE	FAT
+10.9	+14	+24	+41	+0	+53	+1.10	+1.03	+0.11
\$M	\$W	\$F	\$G	\$B	\$C	\$T	\$D	\$E
+79	+72	+100	+78	+179	+311			

CED	BW	WW	YW	DMI	YH	SC	DOC	HP	CEM	MILK	MW	MH	CW	MB	REA	FAT	TEND
16	28	54	38	41	86	12	35	29	7	70	73	92	49	8	13	63	25

NON-PARENT FEMALES

Top 1% \$C	Top 4% CEM	Top 10% \$M	Top 15% CED	Top 15% YW
Top 2% \$B	Top 4% REA	Top 10% Marb	Top 15% Doc	Top 20% CWT
Top 3% \$G	Top 10% \$F	Top 15% \$W	Top 15% WW	Top 20% SC

• Rita 415 is a sensational low-birth, carcass and \$C prospect sired by the popular young sire, Inertia and stemming from the \$30,000 selection of Lylester in the 2016 Deer Valley Farm Sale, Rita 6289.

• The dam of Lot 2 blends the \$250,000 balanced-trait sire in the Deer Valley Farm, Vintage Angus and Basin Angus herd sire rosters, Generation with a proven and productive daughter of the longtime breed RE and \$B leader, Rito 9Q13. The dam of Lot 2 records a WR 2@104.

• Rita 6350, a maternal sister to the dam of Lot 2 was selected by Boyd Beef in the 2016 Deer Valley Farm Sale for \$15,000.



Lylester First Lady 557 / Lot 3

Vintage First Lady 7077 /
The dam of Lot 3.

3 Lylester First Lady 557

Birth Date: 5-26-2020 Cow #*19755887 Tattoo: 557

3F Epic 4631
EXAR Monumental 6056B
*18379347 *FWY 7008 of C085 4029

*Varilek Product 2010 04
Zebo Queen 1072
#*AAR Ten X 7008 SA
+*FWY Rita C085

+*Quaker Hill Rampage 0A36
Vintage First Lady 7077
+*18713016 +*Vintage First Lady 4389

#MCC Daybreak
+*QHF Blackcap 6E2 of 4V16 4355
#*VAR Discovery 2240
+*Three Trees First Lady 6108

CED	BW	WW	YW	RADG	DMI	YH	SC	DOC
+11	-1.1	+68	+130	+31	+1.72	+4	+5.2	+11
HP	CEM	MILK	MW	MH	CW	MARB	RE	FAT
+14.2	+16	+17	+90	+5	+60	+1.31	+1.12	-.002
SM	+46	SW	+60	SF	+108	SG	+90	\$B
								+199
								\$C
								+304

CED	BW	WW	YW	DMI	YH	SC	DOC	HP	CEM	MILK	MW	MH	CW	MB	REA	FAT	TEND
16	17	48	26	75	85	59	68	22	3	87	46	65	39	1	4	24	79

NON-PARENT FEMALES

Top 1% \$B	Top 1% CEM	Top 4% \$F	Top 10% CWT	Top 15% HPreg
Top 1% \$C	Top 2% Marb	Top 5% RADG	Top 10% YW	Top 15% MCW
Top 1% \$G	Top 2% REA	Top 10% BW	Top 15% CED	Top 15% WW

• Will sell with Angus Registered #18515996.

First Lady 557 is an exciting combination female of low-birth, carcass and \$C sired by the \$80,000 Monumental and produced by the cornerstone of the feed efficiency leading Lady family in the Lylester program, First Lady 7077.

• The dam of Lot 3 was the \$240,000 valued fourth high-selling open heifer of the 2017 Vintage Angus Sale and blends the multi-trait leader, Rampage with the powerful daughter of the \$110,000 Discovery. The \$320,000 valued grandam sold in the 2018 Vintage Angus sale. She has now generated over a half million dollars in female sales. Maternal sisters to the dam of Lot 3 include: First Lady 7013, the \$140,000 valued fifth high-selling open heifer of the 2017 Vintage Angus Sale selected by Rooney Angus Ranch; First Lady 7414, the \$65,000 top-selling fall pair of the 2019 Vintage Angus Sale selling to Dixie Farms; First Lady 8470, the \$40,000 selection of Circle G Ranches in that offering; First Lady 8584 selling in that event to Wall Street Cattle Company; First Lady 8500 selected by GDD Angus in the 2019 Vintage Angus Sale; and First Lady 8049 and First Lady 8233 selling in that event to Truckenbroad Brothers.

• Maternal sisters to this outstanding prospect include: First Lady 9133, the \$34,000 second high-selling open heifer of the 2019 Spring Grove Ranch Sale selected by Vintage Angus Ranch; and First Lady 9113, the \$22,000 third high-selling open heifer of that offering selling to Crazy K Ranch.

Lylelester Ranch Sale hosted by





Lylester Estina 577 / Lot 4

4 Lylester Estina 577

Birth Date: 6-7-2020

Cow *19754661

Tattoo: 577

#*VAR Discovery 2240
Lylester Pit Boss 145
+*19063867 +*VAR Blackcap 9319

#*AAR Ten X 7008 SA
+*Deer Valley Rita 0308
#*Connealy All Around
+*EXAR New Design 4212

+*VAR Rubicon 5414
Crazy K Estina 8047
*19050927 *Pine Tree Estina 3111

+*Quaker Hill Rampage 0A36
+*Sandpoint Blackbird 8809
#+*PA Power Tool 9108
+*Spruce Mtn Estina 1833

CED	BW	WW	YW	RADG	DMI	YH	SC	DOC										
+6	+2.4	+82	+149	+33	+1.44	+8	-13	+18										
HP	CEM	MILK	MW	MH	CW	MARB	RE	FAT										
+14.5	+10	+27	+117	+8	+78	+1.26	+90	-032										
\$M	\$4	\$W	\$79	\$F	\$129	\$G	\$88	\$B	\$217	\$C	\$335							
CED	BW	WW	YW	5	83	43	95	47	20	57	58	8	23	7	2	27	FAT	TEND
56	69	19	5	83	43	95	47	20	57	58	8	23	7	2	27	11	19	

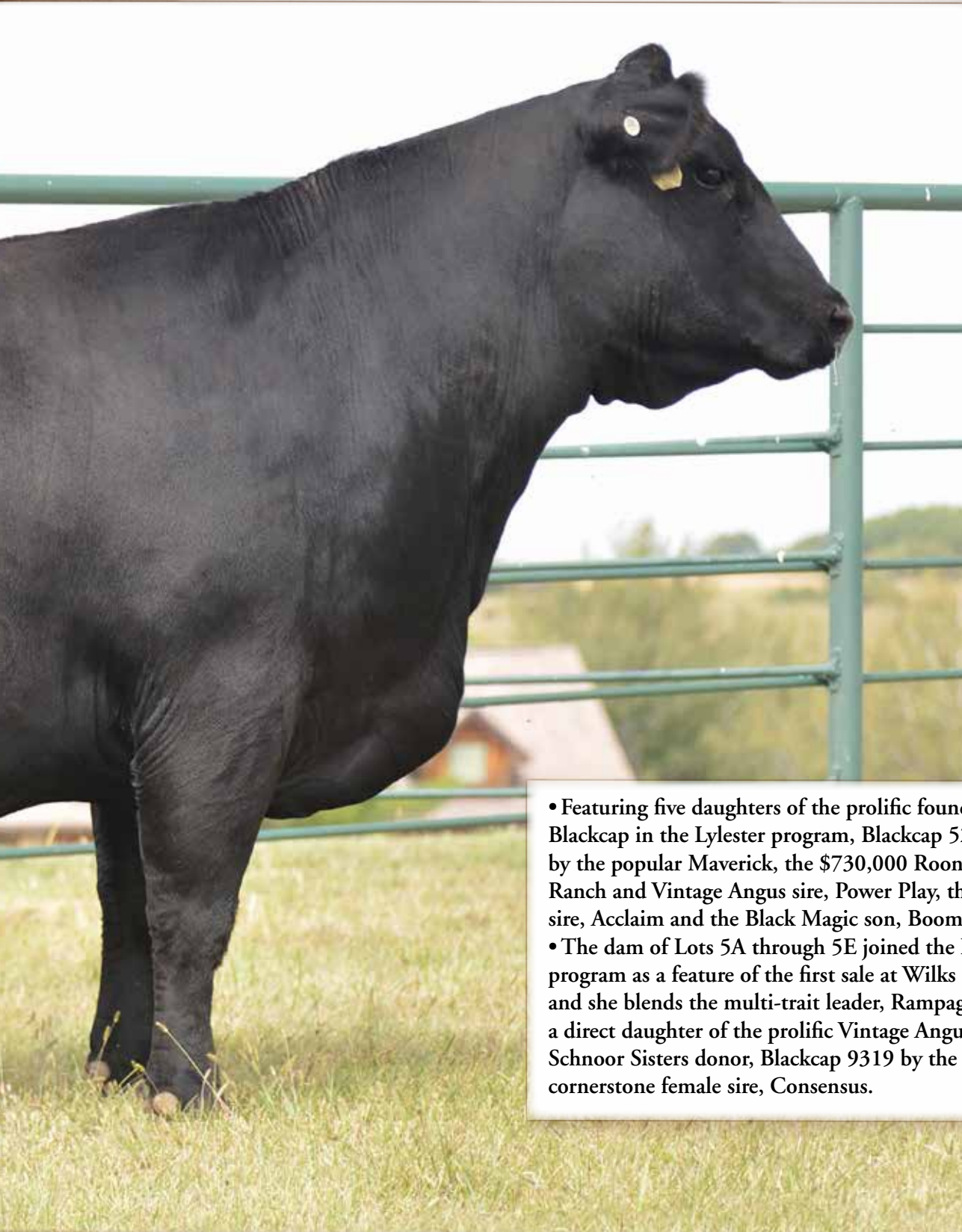
NON-PARENT FEMALES

Top 1% \$B	Top 1% CWT	Top 2% WW	Top 10% MH
Top 1% \$C	Top 1% YW	Top 3% Marb	Top 10% REA
Top 1% \$F	Top 2% MCW	Top 5% \$W	Top 15% HPreg
Top 1% \$G	Top 2% RADG	Top 10% Fat	Top 20% YH

Estina 577 is a powerful growth, carcass, \$B and \$C combination female who blends the featured Lylester multi-trait leading herd sire, Pit Boss 145 with the \$45,000 selection in the 2019 Crazy K Ranch Sale as the sixth high-selling open heifer, Estina 8047.

- The first calf heifer dam of Lot 4 blends the proven growth sire, Rubicon 5414 and the foundation maternal sire, Power Tool with a direct daughter of the longtime Spruce Mountain Ranch donor, Estina of Conanga 4352, the dam of the former Accelerated Genetics roster member, First Option 1563.
- Estina 577 will be delivered after weaning.





- Featuring five daughters of the prolific foundation Blackcap in the Lylester program, Blackcap 5223 sired by the popular Maverick, the \$730,000 Rooney Angus Ranch and Vintage Angus sire, Power Play, the outcross sire, Acclaim and the Black Magic son, Boomer 6351.
- The dam of Lots 5A through 5E joined the Lylester program as a feature of the first sale at Wilks Ranch and she blends the multi-trait leader, Rampage with a direct daughter of the prolific Vintage Angus and Schnoor Sisters donor, Blackcap 9319 by the cornerstone female sire, Consensus.



Lylester Blackcap 473 /
Lot 5A



Lylester Blackcap 443 /
Lot 5B

5A Lylester Blackcap 473

Birth Date: 9-27-2019 Cow +*19589726 Tattoo: 473

#+*Basin Payweight 1682
21AR O Lass 7017
Poss Maverick *18962396
Poss Pride 5163
+*Quaker Hill Rampage 0A36
#MCC Daybreak
+*QHF Blackcap 6E2 of4V16 4355
Wilks Blackcap 5223
+*18408374 +*VAR Blackcap 3332
+*Connealy Consensus 7229
+*VAR Blackcap 9319

CED	BW	WW	YW	RADG	DMI	YH	SC	DOC									
+0	+3.2	+88	+148	+30	+1.35	+8	+1.35	+24									
HP	CEM	MILK	MW	MH	CW	MARB	RE	FAT									
+11.0	+9	+27	+97	+6	+71	+1.19	+58	+0.12									
\$M	+64	\$W	+88	\$F	+111	\$G	+77	\$B	+188	\$C	+308						
CED	BW	WW	YW	DMI	YH	SC	DOC	HP	CEM	MILK	MW	MH	CW	MB	REA	FAT	TEND
98	98	1	3	95	12	11	19	57	29	55	6	14	6	5	48	60	6

NON-PARENT FEMALES

Top 1% \$B	Top 1% YW	Top 3% \$F	Top 10% MCW	Top 20% SC
Top 1% \$C	Top 2% \$W	Top 3% \$G	Top 10% RADG	Top 20% YH
Top 1% WW	Top 2% CWT	Top 4% Marb	Top 20% Doc	Top 25% MH

5B Lylester Blackcap 443

Birth Date: 9-5-2019 Cow +*19589728 Tattoo: 443

#+*Basin Payweight 1682
21AR O Lass 7017
Poss Maverick *18962396
Poss Pride 5163
+*Quaker Hill Rampage 0A36
#MCC Daybreak
+*QHF Blackcap 6E2 of4V16 4355
Wilks Blackcap 5223
+*18408374 +*VAR Blackcap 3332
+*Connealy Consensus 7229
+*VAR Blackcap 9319

CED	BW	WW	YW	RADG	DMI	YH	SC	DOC									
+6	+1.5	+86	+146	+32	+1.28	+6	+7.9	+25									
HP	CEM	MILK	MW	MH	CW	MARB	RE	FAT									
+9.6	+10	+26	+116	+7	+72	+80	+88	-.015									
\$M	+58	\$W	+88	\$F	+116	\$G	+65	\$B	+180	\$C	+291						
CED	BW	WW	YW	DMI	YH	SC	DOC	HP	CEM	MILK	MW	MH	CW	MB	REA	FAT	TEND
20	12	6	12	85	52	39	20	59	38	52	4	21	8	50	13	23	31

NON-PARENT FEMALES

Top 1% WW	Top 2% \$F	Top 2% MCW	Top 10% \$G	Top 15% REA
Top 1% YW	Top 2% \$W	Top 3% \$C	Top 15% Doc	Top 20% Fat
Top 2% \$B	Top 2% CWT	Top 3% RADG	Top 15% MH	Top 25% Marb



Lylester Blackcap 527 / Lot 5C

5c Lylester Blackcap 527

Birth Date: 1-18-2020 Cow #*19701369 Tattoo: 527

#*Basin Payweight 1682
VAR Power Play 7018
+*18717078 +*Sandpoint Blackbird 8809

#*Basin Payweight 006S
21AR O Lass 7017
#*Connealy Onward
+Riverbend Blackbird 4301

+*Quaker Hill Rampage 0A36
Wilks Blackcap 5223
+*18408374 +*VAR Blackcap 3332

#MCC Daybreak
+*QHF Blackcap 6E2 of4V16 4355
#*Connealy Consensus 7229
+*VAR Blackcap 9319

CED	BW	WW	YW	RADG	DMI	YH	SC	DOC									
+2	+3.9	+95	+158	+27	+1.88	+6	+60	+22									
HP	CEM	MILK	MW	MH	CW	MARB	RE	FAT									
+11.2	+5	+27	+99	+6	+81	+83	+70	-.005									
\$M	+68	\$W	+94	\$F	+115	\$G	+63	\$B	+178	\$C	+299						
CED	BW	WW	YW	DMI	YH	SC	DOC	HP	CEM	MILK	MW	MH	CW	MB	REA	FAT	TEND
93	99	2	5	96	39	53	43	58	68	66	12	27	5	41	46	24	57

NON-PARENT FEMALES

Top 1% \$W	Top 1% YW	Top 2% \$F	Top 25% \$M	Top 25% Marb
Top 1% CWT	Top 2% \$B	Top 10% MCW	Top 25% Doc	Top 25% RADG
Top 1% WW	Top 2% \$C	Top 15% \$G	Top 25% MH	



VAR Power Play 7018 / Sire of Lot 5C.



Poss Maverick / Sire of Lots 5A and 5B.

Lylelester Ranch Sale hosted by



*Adam Moss*

Lylelester Ranch Sale hosted by





5_D Lylester Blackcap 381

Birth Date: 2-19-2019 Cow +*19408998 Tattoo: 381

Jindra Acclaim
*17972810

*Jindra 3rd Dimension
+Jindra Blackbird Lassy 1111

Wilks Blackcap 5223
+*18408374

+*Quaker Hill Rampage 0A36
+*VAR Blackcap 3332

#*Jindra Double Vision
Jindras Sapphire J 417
#*Connealy Impression
Jindras Enchantress J 102

#MCC Daybreak
+*QHF Blackcap 6E2 of4V16 4355
#*Connealy Consensus 7229
+*VAR Blackcap 9319

CED	BW	WW	YW	RADG	DMI	YH	SC	DOC									
+10	+1.8	+87	+154	+34	+1.30	+9	+22	+23									
HP	CEM	MILK	MW	MH	CW	MARB	RE	FAT									
+11.7	+11	+27	+98	+8	+79	+62	+80	-.040									
\$M	+65	\$W	+90	\$F	+132	\$G	+57	\$B	+190	\$C	+311						
CED	BW	WW	YW	SC	DOC	HP	CEM	MILK	MW	MH	CW	MB	REA	FAT	TEND		
73	97	5	3	75	20	74	9	35	58	51	9	17	4	85	14	1	50

NON-PARENT FEMALES

Top 1% \$B Top 1% CWT Top 4% Fat Top 20% \$G Top 25% Doc
Top 1% \$C Top 1% RADG Top 10% MCW Top 20% CED
Top 1% \$F Top 1% WW Top 10% MH Top 20% CEM
Top 1% \$W Top 1% YW Top 15% YH Top 20% REA

• Due 1/1/21 to Roseda Powerball23 F091.

5_E Lylester Blacpcap 540

Birth Date: 1-20-2020 Cow +*19702411 Tattoo: 540

Byergo Boomer 6351
*18833395

*Byergo Black Magic 3348
Byergo Miss Elia 2821

Wilks Blackcap 5223
+*18408374

+*Quaker Hill Rampage 0A36
+*VAR Blackcap 3332

#Silveiras Conversion 8064
*Byergo Elia Cupcake 5900
*Byergo Andy 0115
Byergo Miss Elia 7313

#MCC Daybreak
+*QHF Blackcap 6E2 of4V16 4355
#*Connealy Consensus 7229
+*VAR Blackcap 9319

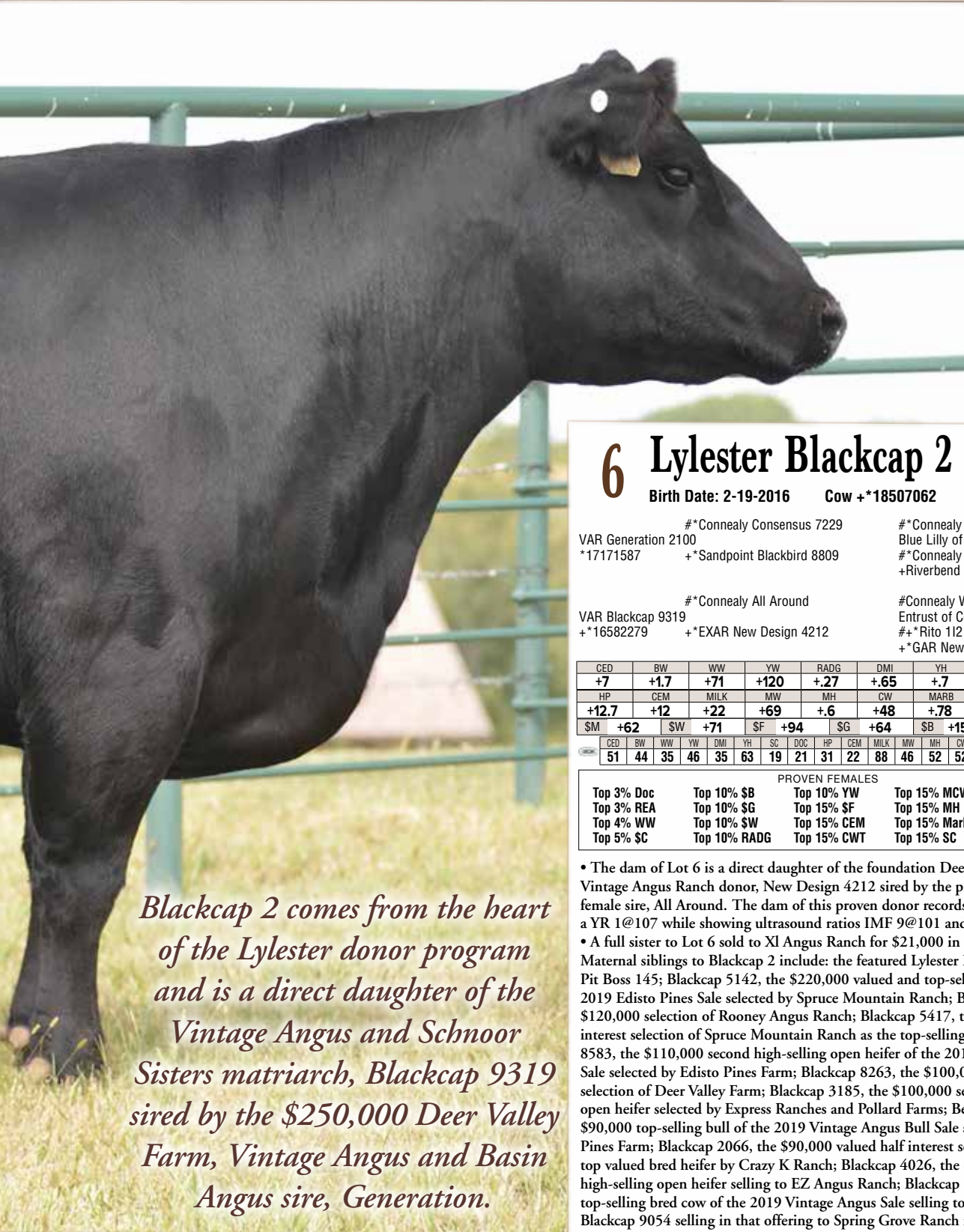
CED	BW	WW	YW	RADG	DMI	YH	SC	DOC									
+7	+2.0	+86	+150	+32	+1.37	+1.0	+78	+22									
HP	CEM	MILK	MW	MH	CW	MARB	RE	FAT									
+11.3	+6	+34	+107	+8	+69	+73	+1.11	-.017									
\$M	+59	\$W	+95	\$F	+111	\$G	+65	\$B	+175	\$C	+286						
CED	BW	WW	YH	SC	DOC	HP	CEM	MILK	MW	MH	CW	MB	REA	FAT	TEND		
65	78	7	5	77	20	26	24	71	90	15	4	11	11	54	10	34	82

NON-PARENT FEMALES

Top 1% \$W Top 3% \$B Top 4% \$C Top 10% MH
Top 1% WW Top 3% \$F Top 4% MCW Top 10% YH
Top 1% YW Top 3% CWT Top 4% Milk Top 20% Fat
Top 2% REA Top 3% RADG Top 10% \$G Top 25% Doc



Adam Moss



Blackcap 2 comes from the heart of the Lylester donor program and is a direct daughter of the Vintage Angus and Schnoor Sisters matriarch, Blackcap 9319 sired by the \$250,000 Deer Valley Farm, Vintage Angus and Basin Angus sire, Generation.

6 Lylester Blackcap 2

Birth Date: 2-19-2016 Cow +*18507062 Tattoo: 2

VAR Generation 2100
*17171587

#*Connealy Consensus 7229
+*Sandpoint Blackbird 8809

#*Connealy Consensus
Blue Lilly of Conanga 16
#*Connealy Onward
+Riverbend Blackbird 4301

VAR Blackcap 9319
+*16582279

#*Connealy All Around
+*EXAR New Design 4212

#Connealy Whitman
Entrust of Conanga 894
#*Rito 112 of 2536 Rito 616
+*GAR New Design 1200

CED	BW	WW	YW	RADG	DMI	YH	SC	DOC
+7	+1.7	+71	+120	+27	+65	+7	+1.30	+28
HP	CEM	MILK	MW	MH	CW	MARB	RE	FAT
+12.7	+12	+22	+69	+6	+48	+78	+92	-.010
\$M	+62	\$W	+71	\$F	+94	\$G	+64	\$B
+158								+267

CED	BW	WW	YW	DMI	YH	SC	DOC	HP	CEM	MILK	MW	MH	CW	MB	REA	FAT	TEND
51	44	35	46	35	63	19	21	31	22	88	46	52	52	29	12	15	90

PROVEN FEMALES				
Top 3% Doc	Top 10% \$B	Top 10% YW	Top 15% MCW	Top 20% Fat
Top 3% REA	Top 10% \$G	Top 15% \$F	Top 15% MH	Top 25% HPreg
Top 4% WW	Top 10% \$W	Top 15% CEM	Top 15% Marb	Top 25% YH
Top 5% \$C	Top 10% RADG	Top 15% CWT	Top 15% SC	

- The dam of Lot 6 is a direct daughter of the foundation Deer Valley Farm and Vintage Angus Ranch donor, New Design 4212 sired by the proven outcross female sire, All Around. The dam of this proven donor records a WR 3@115 and a YR 1@107 while showing ultrasound ratios IMF 9@101 and REA 9@102.
- A full sister to Lot 6 sold to XI Angus Ranch for \$21,000 in 2018 Lylester Sale. Maternal siblings to Blackcap 2 include: the featured Lylester Ranch herd sire, Pit Boss 145; Blackcap 5142, the \$220,000 valued and top-selling female of the 2019 Edisto Pines Sale selected by Spruce Mountain Ranch; Blackcap 5419, the \$120,000 selection of Rooney Angus Ranch; Blackcap 5417, the \$120,000 half interest selection of Spruce Mountain Ranch as the top-selling fall pair; Blackcap 8583, the \$110,000 second high-selling open heifer of the 2019 Vintage Angus Sale selected by Edisto Pines Farm; Blackcap 8263, the \$100,000 half interest selection of Deer Valley Farm; Blackcap 3185, the \$100,000 second high-selling open heifer selected by Express Ranches and Pollard Farms; Best Buy 8577, the \$90,000 top-selling bull of the 2019 Vintage Angus Bull Sale selected by Edisto Pines Farm; Blackcap 2066, the \$90,000 valued half interest selection as the top valued bred heifer by Crazy K Ranch; Blackcap 4026, the \$85,000 second high-selling open heifer selling to EZ Angus Ranch; Blackcap 6018, the \$60,000 top-selling bred cow of the 2019 Vintage Angus Sale selling to 4 Sons Farm; Blackcap 9054 selling in that offering to Spring Grove Ranch for \$35,000; and the \$35,000 Blackcap 9305 selling in that same event to Cox Ranch.
- Open and ready to flush.
- Offering four IVF Grade 1 embryos each to Eastwood & GAR Reliant, total eight embryos.



Lylester Blackbird 526 / Lot 8

Vintage Blackbird 4202 /

A daughter of this Riverbend Ranch selection as the top-selling bred cow of the 2019 Pollard Farms Sale sells as Lot 8.



8 Lylester Blackbird 526

Birth Date: 1-8-2020

Cow +*19703139

Tattoo: 526

Jindra Acclaim
*17972810

*Jindra 3rd Dimension

+Jindra Blackbird Lassy 1111

Vintage Blackbird 4202
+*17804168

*Connealy Consensus 7229

+*Sandpoint Blackbird 8809

*Jindra Double Vision
Jindras Sapphire J 417
*Connealy Impression
Jindras Enchantress J 102

*Connealy Consensus
Blue Lilly of Conanga 16
*Connealy Onward
+Riverbend Blackbird 4301

CED	BW	WW	YW	RADG	DMI	YH	SC	DOC
+7	+1.8	+75	+147	+36	+1.41	+1.0	+1.16	+20
HP	CEM	MILK	MW	MH	CW	MARB	RE	FAT
+11.6	+17	+31	+127	+1.5	+68	+86	+77	-.043
\$M	\$W	\$F	\$G	\$B	\$C	\$A	\$T	\$D
+39	+73	+121	+68	+189	+284			
CED	BW	WW	YW	DMI	YH	SC	DOC	HP
45	61	27	1	84	20	87	56	57
CEM	MILK	MW	MH	CW	MARB	RE	FAT	TEND
1	48	2	1	14	57	32	2	20

NON-PARENT FEMALES

Top 1% \$B	Top 1% MH	Top 3% Fat	Top 10% \$W	Top 25% REA
Top 1% \$F	Top 1% RADG	Top 4% \$C	Top 10% Milk	
Top 1% CEM	Top 1% YW	Top 5% WW	Top 10% YH	
Top 1% MCW	Top 3% CWT	Top 10% \$G	Top 20% Marb	

A special highlight from the herd sire producing Blackbird family, a daughter of the \$115,000 former Express Ranches and Pollard Farms donor, Blackbird 4202 sired by the outcross feature, Acclaim.

The dam of Lot 8 was selected by Riverbend Ranch as the top-selling donor of the 2019 Pollard Farms Sale and is a direct daughter of the top income producing donor in the Vintage Angus Ranch program, Blackbird 8809 by the cornerstone female sire, Consensus 7229. Blackbird 4202, the dam of Lot 8 records a WR 2@102 while showing an ultrasound IMF ratio 7@112.

• Maternal sisters to Lot 8 include: Blackbird 6726, the \$200,000 valued Lylester and Vintage Angus Ranch donor; Blackbird 8677, the \$100,000 top-selling female of the 2019 Pollard Farms Sale selected by Ankony Angus; Blackbird 7064, the \$75,000 top-selling bred heifer of the 2018 Pollard Sale selected by Ankony Angus; Blackbird 6132, the \$35,000 second high-selling bred heifer of the 2017 Pollard Sale selling to Sandringham Farm; Blackbird 7567, the \$15,000 fourth high-selling fall pair of the 2019 Pollard Sale selected by Belle Point Ranch; Blackbird 9725 selling in the 2019 Big Event Sale to Wilks Ranch; and a \$13,000 heifer pregnancy selected by Spruce Mountain Ranch in the 2020 Bases Loaded Sale.



Lylester Blackcap 390 / Lot 9

9 Lylester Blackcap 390

Birth Date: 8-8-2019

Cow #*19588323

Tattoo: 390

3F Epic 4631
EXAR Monumental 6056B
*18379347 *FWY 7008 of C085 4029

*Varilek Product 2010 04
Zebo Queen 1072
#*AAR Ten X 7008 SA
+*FWY Rita C085

*VAR Generation 2100
Vintage Blackcap 4341
*17906852 *VAR Blackcap 1271

#*Connealy Consensus 7229
+*Sandpoint Blackbird 8809
#*Connealy Impression
+*Limestone Blackcap T908

CED	BW	WW	YW	RADG	DMI	YH	SC	DOC										
+5	+1.8	+80	+141	+28	+1.81	+7	+1.38	+27										
HP	CEM	MILK	MW	MH	CW	MARB	RE	FAT										
+7.5	+10	+27	+74	+6	+68	+1.01	+85	-.007										
SM	+59	SW	+85	SF	+108	SG	+73	SB	+181	SC	+294							
	CED	BW	WW	YW	DMI	YH	SC	DOC	HP	CEM	MILK	MW	MH	CW	MB	REA	FAT	TEND
	79	87	15	17	86	50	15	10	87	37	29	39	43	13	9	6	16	29

NON-PARENT FEMALES

Top 2% \$B	Top 2% YW	Top 10% Doc	Top 20% RADG
Top 2% \$C	Top 3% CWT	Top 10% Marb	Top 25% MCW
Top 2% \$W	Top 4% \$F	Top 15% REA	Top 25% MH
Top 2% WW	Top 5% \$G	Top 15% SC	

Blackcap 390 is a balanced-trait prospect sired by the \$80,000 Monumental and produced by the \$20,000 selection of Lylester in the 2015 Vintage Angus Sale, Blackcap 4341.

- The now-deceased dam of Lot 9 blends the balanced-trait sire, Generation and the phenotype female sire, Impression with a direct daughter of the \$80,000 former Luddington and Coleman donor, Expectation 822 by the \$75,000 Rito 112. The dam of Lot 9 balances a BR 2@97 with a YR 1@100 while carrying an ultrasound REA ratio 2@106.
- Maternal sisters to Lot 9 include: Blackcap 211, the \$90,000 valued Vintage Angus Ranch and Lylester donor; Blackcap 139, the \$25,000 top-selling fall pair of the 2018 Lylester Sale selected by Spruce Mountain Ranch; and two maternal sibling pregnancies in that same offering that sold for an average of \$11,250 to Vintage Angus and EZ Angus Ranch.

Lylester Ranch Sale hosted by





Lylester Ever Entense 515 / Lot 10A

DCF Ever Entense 5740 /
Dam of Lots 10A through 10C.



10A Lylester Ever Entense 515

Birth Date: 1-14-2020 Cow +*19701371 Tattoo: 515

#*Basin Payweight 1682
VAR Power Play 7018
+*18717078 +*Sandpoint Blackbird 8809

#*Basin Payweight 006S
21AR O Lass 7017
#*Connealy Onward
+Riverbend Blackbird 4301

#*VAR Discovery 2240
DCF Ever Entense 5740
+*18257373 *VAR Ever Entense 9082

#*AAR Ten X 7008 SA
+*Deer Valley Rita 0308
#*Stevenson CE Deluxe 1914
+VAR Ever Entense 7024

CED	BW	WW	YW	RADG	DMI	YH	SC	DOC
+3	+4.4	+102	+180	+34	+2.34	+9	+1.58	+26
HP	CEM	MILK	MW	MH	CW	MARB	RE	FAT
+12.2	+9	+26	+139	+1.2	+94	+1.16	+89	+005
\$M	\$B	\$W	\$F	\$G	\$B	\$C	\$C	\$C
+65	+92	+136	+80	+216	+345			
CED	BW	WW	YW	DMI	YH	SC	DOC	HP
81	97	5	1	98	66	19	12	40
CEM	MILK	MW	MH	CW	MARB	RE	FAT	TEND
13	74	9	28	4	5	35	63	84

NON-PARENT FEMALES

Top 1% \$B	Top 1% CWT	Top 1% WW	Top 10% SC
Top 1% \$C	Top 1% MCW	Top 1% YW	Top 15% Doc
Top 1% \$F	Top 1% MH	Top 2% \$G	Top 15% REA
Top 1% \$W	Top 1% RADG	Top 5% Marb	Top 15% YH

• Ever Entense 515 currently ranks among non-parent females: Number 13 for WW; Number 20 for YW; Number 21 for \$B and Number 31 for \$C and is one of three non-parent females with her combination of WW, YW, Marb., RE, \$B and \$C and the only female when you add in her BW EPD.

Featuring three daughters of the foundation Lylester Ever Entense, Ever Entense 5740 sired by the \$730,000 Rooney Angus Ranch and Vintage Angus sire, Power Play and the outcross sire, Stonewall.

• The proven and productive dam of Lots 10A through 10C is a direct daughter of the longtime matriarch of the Double Creek Farms program, Ever Entense 9082 by the \$110,000 44 Farms and Vintage Angus female sire, Discovery. The dam of these exciting prospects records a BR 2@99, a WR 2@106 and a YR 1@108 while showing ultrasound ratios IMF 2@99 and REA 2@103.

• Maternal sisters to the dam of Lots 10A through 10C include: Ever Entense 3740, the \$200,000 valued half interest selection of 44 Farms and Innovative Genetics in the 2014 Big Event at Express Ranches; Ever Entense 3734, the \$100,000 valued former Deer Valley Farm and Rutherford Ranches donor; Everentense 37341, the selection of Cox Ranch in the 2015 Deer Valley Farm Sale; and a females in the Double Creek Farms and Evans Farms programs.

Lylelester Ranch Sale hosted by





Lylester Ever Entense 405 /
Lot 10B



Lylester Ever Entense 403 /
Lot 10C

10_B Lylester Ever Entense 405

Birth Date: 8-10-2019 Cow +*19589723 Tattoo: 405

Jindra Stonewall *18996455
*Jindra Acclaim
#Jindra Ebony J 707 593
*Jindra 3rd Dimension
+Jindra Blackbird Lassie 1111
#*Jindra Double Vision
Jindras Steel Magnolia J 506

DCF Ever Entense 5740
+*18257373
**VAR Discovery 2240
*VAR Ever Entense 9082
#*AAR Ten X 7008 SA
+*Deer Valley Rita 0308
#*Stevenson CE Deluxe 1914
+VAR Ever Entense 7024

CED	BW	WW	YW	RADG	DMI	YH	SC	DOC									
+1	+3.5	+75	+140	+34	+1.01	+1.2	+1.07	+19									
HP	CEM	MILK	MW	MH	CW	MARB	RE	FAT									
+12.6	+2	+27	+108	+1.0	+80	+1.15	+42	-.005									
\$M	+43	\$W	+67	\$F	+141	\$G	+74	\$B	+215	\$C	+322						
CED	BW	WW	YW	DMI	YH	SC	DOC	HP	CEM	MILK	MW	MH	CW	MB	REA	FAT	TEND
97	99	16	1	69	7	26	30	35	95	43	3	6	1	6	54	33	36

NON-PARENT FEMALES

Top 1% \$B	Top 1% CWT	Top 2% YW	Top 4% MH	Top 20% \$W
Top 1% \$C	Top 1% RADG	Top 4% \$G	Top 5% Marb	
Top 1% \$F	Top 2% YH	Top 4% MCW	Top 5% WW	

10_C Lylester Ever Entense 403

Birth Date: 8-10-2019 Cow +*19591665 Tattoo: 403

Jindra Stonewall *18996455
*Jindra Acclaim
#Jindra Ebony J 707 593
*Jindra 3rd Dimension
+Jindra Blackbird Lassie 1111
#*Jindra Double Vision
Jindras Steel Magnolia J 506

DCF Ever Entense 5740
+*18257373
**VAR Discovery 2240
*VAR Ever Entense 9082
#*AAR Ten X 7008 SA
+*Deer Valley Rita 0308
#*Stevenson CE Deluxe 1914
+VAR Ever Entense 7024

CED	BW	WW	YW	RADG	DMI	YH	SC	DOC									
+5	+2.3	+72	+132	+33	+95	+1.0	+37	+25									
HP	CEM	MILK	MW	MH	CW	MARB	RE	FAT									
+13.9	+10	+24	+94	+8	+65	+1.17	+66	-.001									
\$M	+52	\$W	+67	\$F	+119	\$G	+78	\$B	+197	\$C	+308						
CED	BW	WW	YW	DMI	YH	SC	DOC	HP	CEM	MILK	MW	MH	CW	MB	REA	FAT	TEND
82	92	19	5	59	16	72	8	15	46	73	7	9	7	4	36	37	38

NON-PARENT FEMALES

Top 1% \$B	Top 2% RADG	Top 5% Marb	Top 10% MH	Top 15% Doc
Top 1% \$C	Top 3% \$G	Top 5% YW	Top 10% WW	Top 20% \$W
Top 1% \$F	Top 5% CWT	Top 10% MCW	Top 10% YH	Top 20% HPreg



Lylester Heroine 336 /
Lot 11



Lylester Early Bird 440 /
Lot 12

11 Lylester Heroine 336

Birth Date: 9-1-2018 Cow *19395855 Tattoo: 336

SydGen Enhance 18170041
 *SydGen Exceed 3223
 SydGen Rita 2618
 *SydGen Googol
 *SydGen Forever Lady 1255
 *SydGen Liberty GA 8627
 #Fox Run Rita 9308
 *EXAR Stud 4658B
 SydGen Heroine 6807
 +*18782930
 BAR Heroine 1250-454
 #*AAR Ten X 7008 SA
 +*BoBo Rita 1559
 #*B/R New Day 454
 BAR Heroine 9070-G803

CED	BW	WW	YW	RADG	DMI	YH	SC	DOC									
+5	+1.9	+67	+131	+32	+1.42	+6	+25	+23									
HP	CEM	MILK	MW	MH	CW	MARB	RE	FAT									
+7.2	+10	+32	+60	+3	+60	+1.11	+88	-.036									
\$M	\$B	\$W	\$F	\$G	\$B	\$W	\$F	\$G									
+56	+74	+108	+81	+189	+301												
CED	BW	WW	YW	DMI	YH	SC	DOC	HP	CEM	MILK	MW	MH	CW	MB	REA	FAT	TEND
41	47	32	7	91	44	86	13	86	33	18	47	62	13	8	15	13	73

PROVEN FEMALES

Top 1% \$B	Top 3% RADG	Top 5% YW	Top 10% Marb	Top 15% WW
Top 2% \$C	Top 4% \$F	Top 10% \$W	Top 10% Milk	Top 25% Doc
Top 2% \$G	Top 5% Fat	Top 10% CWT	Top 15% REA	

• Heroine 336 is an exciting first calf heifer sired by the proven leader of the ORiGen rosters, Enhance and stems from a first calf heifer who blends the low-birth and Marb. sire, Stud with a daughter of the longtime 44 Farms leader, New Day 454.

• Heroine 336 records a weaning ratio of 105. Decision 3320-7229, a maternal brother to the dam of Lot 11 was the top-selling selection of Sydenstricker Genetics in a past Brinkley Angus Ranch sale.

• Has a 9/8/20 heifer calf, Lot 11A, by GB Fireball 672. 65lbs.

12 Lylester Early Bird 440

Birth Date: 9-4-2019 Cow +*19579779 Tattoo: 440

Lylester Pit Boss 145
 +*19063867
 #*VAR Discovery 2240
 +*VAR Blackcap 9319
 *GAR Early Bird
 GAR Early Bird N955
 +*18446110
 #*AAR Ten X 7008 SA
 +*Deer Valley Rita 0308
 #*Connealy All Around
 +*EXAR New Design 4212
 +*GAR Daylight
 +*GAR Progress 830
 +*GAR Prediction
 +*GAR 28 Ambush 1069

CED	BW	WW	YW	RADG	DMI	YH	SC	DOC									
+8	+1.6	+88	+143	+30	+1.05	+8	+44	+23									
HP	CEM	MILK	MW	MH	CW	MARB	RE	FAT									
+18.5	+10	+14	+117	+1.1	+66	+1.00	+78	-.041									
\$M	+64	\$W	+76	\$F	+113	\$G	+75	\$B	+188	\$C	+308						
CED	BW	WW	YW	DMI	YH	SC	DOC	HP	CEM	MILK	MW	MH	CW	MB	REA	FAT	TEND
11	12	14	41	41	75	74	39	2	62	99	17	23	31	10	38	6	74

NON-PARENT FEMALES

Top 1% \$B	Top 2% \$F	Top 4% \$G	Top 10% Marb	Top 25% Doc
Top 1% \$C	Top 2% MCW	Top 4% CWT	Top 10% RADG	
Top 1% HPreg	Top 2% MH	Top 4% Fat	Top 20% REA	
Top 1% WW	Top 2% YW	Top 10% \$W	Top 20% YH	

• Early Bird 440 is a direct daughter of the \$25,000 selection of Lylester in the 2018 Gardiner Angus Ranch Sale, Early Bird N955 sired by the proven multi-trait Lylester sire, Pit Boss 145.

• The dam of Lot 12 blends the proven calving-ease of Early Bird and the female sire, Prediction with the featured Hirschy Angus donor, Ambush 1068, the daughter of the \$360,000 valued now-deceased Objective 1885.

Lylelester Ranch Sale hosted by



*Adam Moss*



13 Lylester Blackbird 353

Birth Date: 12-31-2018

Cow *19406925

Tattoo: 353

#*Connealy Black Granite
Bar R Jet Black 5063
*18389838 Bar R Iris Anita 0113

#*Connealy Consensus 7229
#Eura Elga of Conanga 9109
#Sitz Upward 307R
Bar R Anita 7081

+*EXAR Stud 4658B
ACC Blackbird 7041
+*18722050 +*Spruce Mtn Blackbird 3392

#*AAR Ten X 7008 SA
+*BoBo Rita 1559
#*Hoover Dam
+*Riverbend Blackbird T1088

CED	BW	WW	YW	RADG	DMI	YH	SC	DOC			
+12	-.4	+70	+118	+26	+68	+4	+39	+15			
HP	CEM	MILK	MW	MH	CW	MARB	RE	FAT			
+9.4	+13	+22	+56	+2	+54	+87	+74	+0.11			
\$M	+65	\$W	+75	\$F	+99	\$G	+64	\$B	+163	\$C	+276

CED	BW	WW	YW	DMI	YH	SC	DOC	HP	CEM	MILK	MW	MH	CW	MB	REA	FAT	TEND
23	33	43	61	20	85	70	68	62	20	78	62	77	42	16	35	55	16

NON-PARENT FEMALES

Top 10% \$B	Top 10% \$W	Top 10% WW	Top 20% CWT	Top 25% REA
Top 10% \$C	Top 10% CED	Top 15% \$G	Top 20% Marb	
Top 10% \$F	Top 10% CEM	Top 15% BW	Top 20% YW	

- Blackbird 353 is an outstanding low-birth daughter of the featured phenotype sire, Jet Black 5063 and stems from a first calf heifer selected by Lylester as the \$18,000 top-selling bred heifer of the 2018 Angus of Clear Creek Sale, Blackbird 7041.
- Blackbird 353 records a birth ratio of 95 and a weaning ratio of 106. The dam of Lot 13 blends the low-birth and Marb. sire in the Express Ranches, Sydenstricker Genetics and Basin Angus programs, Stud with a direct daughter of the \$50,000 Express Ranches and Rimrock Productions donor, Blackbird T1088 by Hoover Dam.
- Due 10/25/20 to GB Fireball 672.



Lylester Blanche 278 / Lot 14

14 Lylester Blanche 278

Birth Date: 8-16-2018

Cow *19293502

Tattoo: 278

+baldridge Xpand x743
Baldridge Colonel C251
+*18493773 *Baldridge Isabel Y69

#*Hoover Dam
Baldridge Queen S87
#*Styles Upgrade J59
+Baldridge Isabel T935

+*EXAR Stud 4658B
XLAR Blanche 6165
*18541783 S Blanche 170

#*AAR Ten X 7008 SA
+*BoBo Rita 1559
#*S Chisum 6175
S Blanche 1171

CED	BW	WW	YW	RADG	DMI	YH	SC	DOC
+7	+1.0	+62	+120	+29	+1.43	+3	-.07	+24
HP	CEM	MILK	MW	MH	CW	MARB	RE	FAT
+8.1	+6	+35	+29	+1	+62	+79	+81	+024
\$M	\$W	\$F	\$G	\$B	\$C	\$T	\$D	\$E
+74	+78	+110	+60	+171	+296			

CED	BW	WW	YW	DMI	YH	SC	DOC	HP	CEM	MILK	MW	MH	CW	MB	REA	FAT	TEND
62	69	51	8	85	77	78	30	82	72	26	67	67	14	34	10	31	34

PROVEN FEMALES			
Top 2% \$C	Top 4% \$B	Top 15% \$M	Top 20% \$G
Top 3% \$F	Top 5% \$W	Top 15% RADG	Top 20% Doc
Top 3% Milk	Top 10% CWT	Top 15% REA	Top 20% REA

- Blanche 278 is a balanced-trait daughter of Colonel C251 and stems from the selection of Lylester in the 2017 XL Angus Ranch Sale, Blanche 6165.
- The dam of Lot 14 combines the proven low-birth and Marb. sire in the Express Ranches, Sydenstricker Genetics and Basin Angus programs, Stud with a foundation member of the XL Angus Ranch donor program, Blanche 170. The dam of Lot 14 posts a WR 2@104.
- Has a 8/20/20 bull calf, Lot 13A, by GB Fireball 672. 70lbs.

15 Lylester Chloe 418

Birth Date: 8-14-2019

Cow +*19588375

Tattoo: 418

*Byergo Black Magic 3348
Byergo/Double GG Blackstone
*18842383 Byergo May 2871

*Silveiras Conversion 8064
*Byergo Elia Cupcake 5900
Byergo Mighty Mike 0089
Byergo Miss Rito 0148

#*VAR Discovery 2240
DCF Chloe 5769
+*18484962 EXAR Chloe 2385

#*AAR Ten X 7008 SA
+*Deer Valley Rita 0308
#*Connealy Consensus 7229
EXAR Chloe 0601

CED	BW	WW	YW	RADG	DMI	YH	SC	DOC
+1	+2.3	+81	+157	+37	+1.72	+7	+1.48	+33
HP	CEM	MILK	MW	MH	CW	MARB	RE	FAT
+16.2	+8	+27	+99	+6	+64	+1.11	+56	+005
\$M	\$W	\$F	\$G	\$B	\$C	\$T	\$D	\$E
+74	+78	+111	+73	+184	+313			

CED	BW	WW	YW	DMI	YH	SC	DOC	HP	CEM	MILK	MW	MH	CW	MB	REA	FAT	TEND
57	38	5	1	98	26	11	10	37	43	6	15	7	4	43	53	15	

NON-PARENT FEMALES			
Top 1% \$C	Top 2% \$B	Top 5% \$W	Top 10% Marb
Top 1% Doc	Top 2% WW	Top 5% HPreg	Top 15% \$M
Top 1% RADG	Top 3% \$F	Top 10% CWT	Top 15% SC
Top 1% YW	Top 5% \$G	Top 10% MCW	Top 25% MH

- Chloe 418 is a direct daughter of the \$60,000 valued headliner of the herd sire producing Chloe family in the Lylester and Vintage Angus joint embryo programs, Chloe 5769 by the featured Double GG Farms sire, Blackstone.
- A maternal sister to Lot 15, Chloe 9071, was the \$140,000 valued bred heifer selling to Audley Farm in the 2020 Spruce Mountain Sale. Two maternal sibling pregnancies sold for an average of \$17,500 in the 2018 Lylester Sale. Another maternal sister is the lead-off bred heifer selling in the 2020 Pollard Farms sale.
- The dam of Lot 15 combines the foundation female sires Discovery and Consensus with a daughter of the Pathfinder Sire, 263C.



Lylester Chloe 418 / Lot 15



Lylester Blanche 278 / Lot 14

16 Lylester Henrietta 388

Birth Date: 8-7-2019

Cow *19589675

Tattoo: 388

*Byergo Black Magic 3348
Byergo Boomer 6351
*18833395 Byergo Miss Elia 2821

*Silveiras Conversion 8064
*Byergo Elia Cupcake 5900
*Byergo Andy 0115
Byergo Miss Elia 7313

#*VAR Discovery 2240
PF Henrietta Pride 6599
+*18673317 +*PF 5682 Henrietta Pride 0533

#*AAR Ten X 7008 SA
+*Deer Valley Rita 0308
#*SAV Bismarck 5682
+Sitz Henrietta Pride 643T

CED	BW	WW	YW	RADG	DMI	YH	SC	DOC
+6	+2.1	+73	+138	+35	+1.01	+1.2	+2.56	+20
HP	CEM	MILK	MW	MH	CW	MARB	RE	FAT
+12.9	+6	+31	+90	+9	+53	+76	+99	-.092
\$M	\$W	\$F	\$G	\$B	\$C	\$T	\$D	\$E
+60	+76	+103	+71	+174	+286			

CED	BW	WW	YW	DMI	YH	SC	DOC	HP	CEM	MILK	MW	MH	CW	MB	REA	FAT	TEND
79	82	22	3	61	13	1	42	43	79	42	8	6	17	37	4	1	12

NON-PARENT FEMALES			
Top 1% Fat	Top 3% \$B	Top 10% \$G	Top 10% REA
Top 1% RADG	Top 3% YW	Top 10% \$W	Top 10% WW
Top 1% SC	Top 4% \$C	Top 10% MH	Top 15% MCW
Top 2% YH	Top 10% \$F	Top 10% Milk	Top 20% CWT

- Henrietta 388 is a powerful daughter of the Black Magic son, Boomer 6351 and was produced by a first calf heifer selected as the \$30,000 fourth high-selling open heifer of the 2017 Pollard Farms Sale by Lylester, Henrietta Pride 6599.
- Henrietta 388 records a weaning ratio of 110.



The LiveOnline™ format is a live auction, no different from a traditional auction, but takes place online at **www.CCI.live**. You will login and get a buyer number, no different from bidding online at any of our traditional auctions. There will be an auctioneer and you will simply click to bid. The only difference in a LiveOnline™ auction and a traditional auction is that there is not a place of venue or an actual sale location, it all happens online. Like any other sale, you can always visit the farm and view the sale offering prior to sale time.

Of course, you can still participate in the bidding without a computer or mobile device by calling any of the sale staff to place your bid privately or be on the phone at sale time.

GET STARTED

- 1.** Go to www.CCI.live.
- 2.** Login or create a new account (Click on Buyer Login)
- 3.** Go to the sale page for the auction.
- 4.** Click GET BUYER NUMBER and bid with confidence.

TIPS FOR ONLINE BIDDING

- 1.** Make sure you have good internet, preferably with 2 mg upload or more. You can visit www.testmy.net to check your upload speeds. If you are traveling during the auction, pull over or just phone in to bid. Bid early, when the bidding starts, on your lots of interest. By bidding early, we know that you are interested and we will make sure you have every chance to bid.
- 2.** Do not use Internet Explore Version 9 or less. CCI.live is best viewed on Google Chrome, Safari, Firefox and other modern browsers, that are still supported by their operating systems.
- 3.** LiveOnline™ sales, with audio only, are best viewed on your laptop or desktop so that you can enjoy the pre-recorded video of the cattle simultaneously with the auctioneers voice. You can of course still hear the auction and bid on your mobile device.

For more information or assistance signing in for the sale contact CCI.live at 516-366-0734 (text or voice) or email us at schedule@cci.live