

LYLESTER RANCH LLC
FALL FEMALE SALE
September 28, 2021 • 5 pm CST

Hosted by:





LYLESTER RANCH LLC



355 W. Stagecoach Road | Martell, NE 68404
(Hwy 77 South and Stage Coach Road and 1 mile West)
Brandon Snider (402) 432-2541 • bsnider@lylesterranch.com
Dan & Patricia Vergith (702) 499-0783 • pvergith@lylesterranch.com

Welcome Angus Friends,

Our inaugural sale on September 29, 2020 presented challenges AND sale plan adjustments due to the Covid virus. As you know, we decided to change from the scheduled production sale offering to a LiveOnline™ Angus Female Sale. We were pleased with the excellent interest and response to the sale so Patricia and I have decided to have the same sale format again this year. The sale will be held on September 28, 2021 at 5 pm CST will again be hosted by LiveOnline™ at CCI.Live. All sale information to include sale book and videos will be posted online and can be viewed on the AAA, CCI.Live and Cotton & Associates website.

We are extremely pleased and proud of our offering this year!!! Strong, productive cow families has served as the genetic base in our herd over these many years and this year's sale highlights the results of our program. Lot 1, an example of cow family strength; a daughter of Blackbird 8809 selling with a bull calf at side as well as three daughters selling as 1A sired by GAR Home Town, 1B sired by Fireball 672 and 1C sired by GAR Inertia. Most of the females selling have their productive lives ahead of them and we feel they represent our Angus program as we look to the future.

We have a wonderful family and we certainly appreciate the dedication and commitment from all our crew that keep our program going. For more information on the cattle selling, feel free to give me a call or contact any of the Cotton & Associates crew. If you can join us in Martell, we'll be having a dinner at 4 pm and guests are welcome.

Thanks, Dan & Patricia



Dan and Patricia Vergith



Megan Vergith



**Mechelle Vergith
and Logan Bohlke**



Logan Bohlke



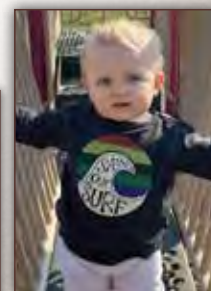
Brandon, Renee, Mason and Cole Snider



**Brandon, Rachel, Asher
and Elliana Frazier**



Elliana Frazier



Asher Frazier

LE

LE

LYLESTER RANCH LLC

FALL FEMALE SALE

September 28, 2021 • 5 pm CST

AUCTIONEER:

Steve Dorran 760-972-7736

RINGMEN:

Terry Cotton 816-390-3227

Levi Lander 308-730-1396

HERD HEALTH:

Cattle will be accompanied with proper health certificates for immediate shipment. An updated breeding and calving report will be available sale day and announcements from the auction block will take precedence over all printed material.

PREGNANCY EXAMINATION INFO:

All cattle have been pregnancy checked by a competent veterinarian and are called safe to the AI or pasture date as can be best determined by advance palpation or ultrasound. In respect to AI dates, they are not unconditionally guaranteed other than the fact that they are pregnant.

TERMS AND CONDITIONS:

Cattle will sell under the suggested Terms and Conditions of the American Angus Association (http://www.angus.org/Pub/suggested_sale_terms.pdf). All announcements from the auction block take precedence over printed materials.

**VIDEOS OF THE SALE OFFERING
WILL BE AVAILABLE
www.cotton-associates.com**



SALE MANAGED BY:



LARRY COTTON	517-294-0777
RYAN COTTON	706-206-8361
MIKE GOTHARD	540-894-1055
JERRY CRENSHAW	703-244-4767
ZACK HILEMAN	540-460-2776

www.cotton-associates.com

SALE CONSULTANT:

Matt Myers at 405-315-7258

Tom Dalbey 404-372-0973

TRUCKING:

Free Trucking will be provided by Lathrop Trucking paid for by Lylester Ranch. Cattle will remain at the ranch until trucking arrangements can be made or pickup arranged.

SALE SETTLEMENT:

All cattle are to be settled for prior to shipping out unless prior arrangement has been made

Ryan Cotton (706) 206-8361

Larry Cotton (517) 294-0777

Mike Gothard (540) 894-1055

Matt Myers (405) 315-7258

Randy Lathrop (847) 910-4673

Brandon Snider (402) 432-2541

CCI.live
Bid Live Online

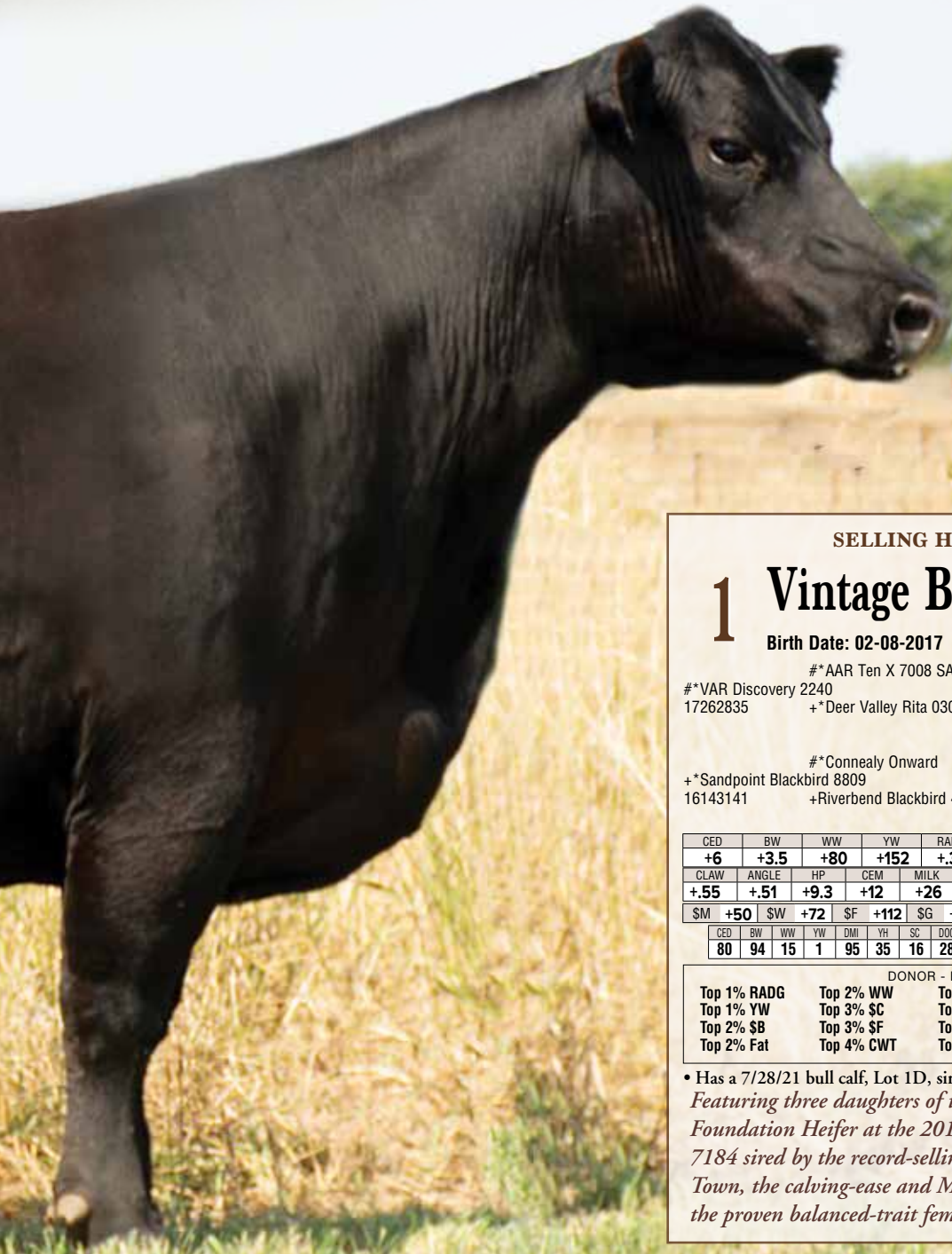
(516) 366-0734 CCI.live.schedule@cci.live

"Gavel's Down, The Best!"



Bull calf selling at side of Lot 1.





SELLING HALF INTEREST

1 Vintage Blackbird 7184

Birth Date: 02-08-2017

Cow +*18745204

Tattoo: 7184

#*AAR Ten X 7008 SA

#*Mytty In Focus

#*VAR Discovery 2240

#AAR Lady Kelton 5551

17262835

+*Deer Valley Rita 0308

#Sitz Upward 307R

*GAR Objective 2345

#*Connealy Onward

#Connealy Lead On

+*Sandpoint Blackbird 8809

Altune of Conanga 6104

16143141

+Riverbend Blackbird 4301

#*GAR Grid Maker

+Riverbend Blackbird 2204

CED	BW	WW	YW	RADG	DMI	YH	SC	DOC	PAP								
+6	+3.5	+80	+152	+34	+1.83	+9	+1.59	+23	+1.79								
CLAW	ANGLE	HP	CEM	MILK	MW	MH	CW	MARB	RE	FAT							
+55	+51	+9.3	+12	+26	+108	+1.0	+62	+87	+95	-.043							
\$M	+50	\$W	+72	\$F	+112	\$G	+69	\$B	+181	\$C	+285	\$AxH	+170	\$AxJ	+175		
CED	BW	WW	YW	DMI	YH	SC	DOC	HP	CEM	MILK	MW	MH	CW	MB	REA	FAT	TEND
80	94	15	1	95	35	16	28	51	15	66	8	21	10	24	7	3	51

DONOR - PROVEN FEMALES

Top 1% RADG	Top 2% WW	Top 4% REA	Top 15% \$AxH	Top 15% Marb
Top 1% YW	Top 3% \$C	Top 5% \$G	Top 15% \$W	
Top 2% \$B	Top 3% \$F	Top 10% \$AxJ	Top 15% CEM	
Top 2% Fat	Top 4% CWT	Top 10% SC	Top 15% Doc	

- Has a 7/28/21 bull calf, Lot 1D, sired by Greater Good.

Featuring three daughters of the selection of Lylester as the Foundation Heifer at the 2018 National Western, Blackbird 7184 sired by the record-selling Gardiner Angus sire, Home Town, the calving-ease and Marb. feature, Fireball 672, and the proven balanced-trait female sire, Inertia.

- Blackbird 7184 is a direct daughter of the \$5.5 million producer in the Vintage Angus Ranch and Herbster Angus donor, Blackbird 8809 sired by the \$110,000 longtime featured female sire in the 44 Farms and Vintage Angus programs, Discovery. Full sisters to the dam of these prospects include: Blackbird 7203, the \$280,000 valued half interest selection of Herbster Angus as the top-valued open heifer of the 2017 Vintage Angus Sale; and Blackbird 7228, the \$250,000 top-selling bred heifer of the 2018 Vintage Angus Sale selected by Rooney Angus Ranch.
- Maternal siblings to the foundation Lylester Blackbird, Blackbird 7184 include: Power Play 7018, the \$730,000 record-selling Vintage Angus Ranch sire selling to Rooney Angus Ranch; Blackbird 7204, the \$400,000 valued

half interest selection of Optum Angus; Blackbird 7480, the \$250,000 top-selling open heifer of the 2018 Vintage Angus Ranch Sale selected by Riverbend Ranch; Blackbird 7260, the \$200,000 Riverbend Ranch selection as the top-selling female of the 2017 Vintage Angus Ranch Sale; Blackbird 5415, the \$260,000 valued half interest selection as the lead-off female of the record-setting 2016 Vintage Angus Sale selected by Spruce Mountain Ranch and Black Gold Genetics; and Blackbird 2318, the \$220,000 valued Spruce Mountain Ranch and Express Ranches now-deceased donor.

- Blackbird 559, a daughter of Lot 1 and maternal sister to Lot 1A through 1C, was the \$20,000 lead-off selection of Vintage Angus Ranch in the 2020 Lylester Ranch LiveOnline Sale.

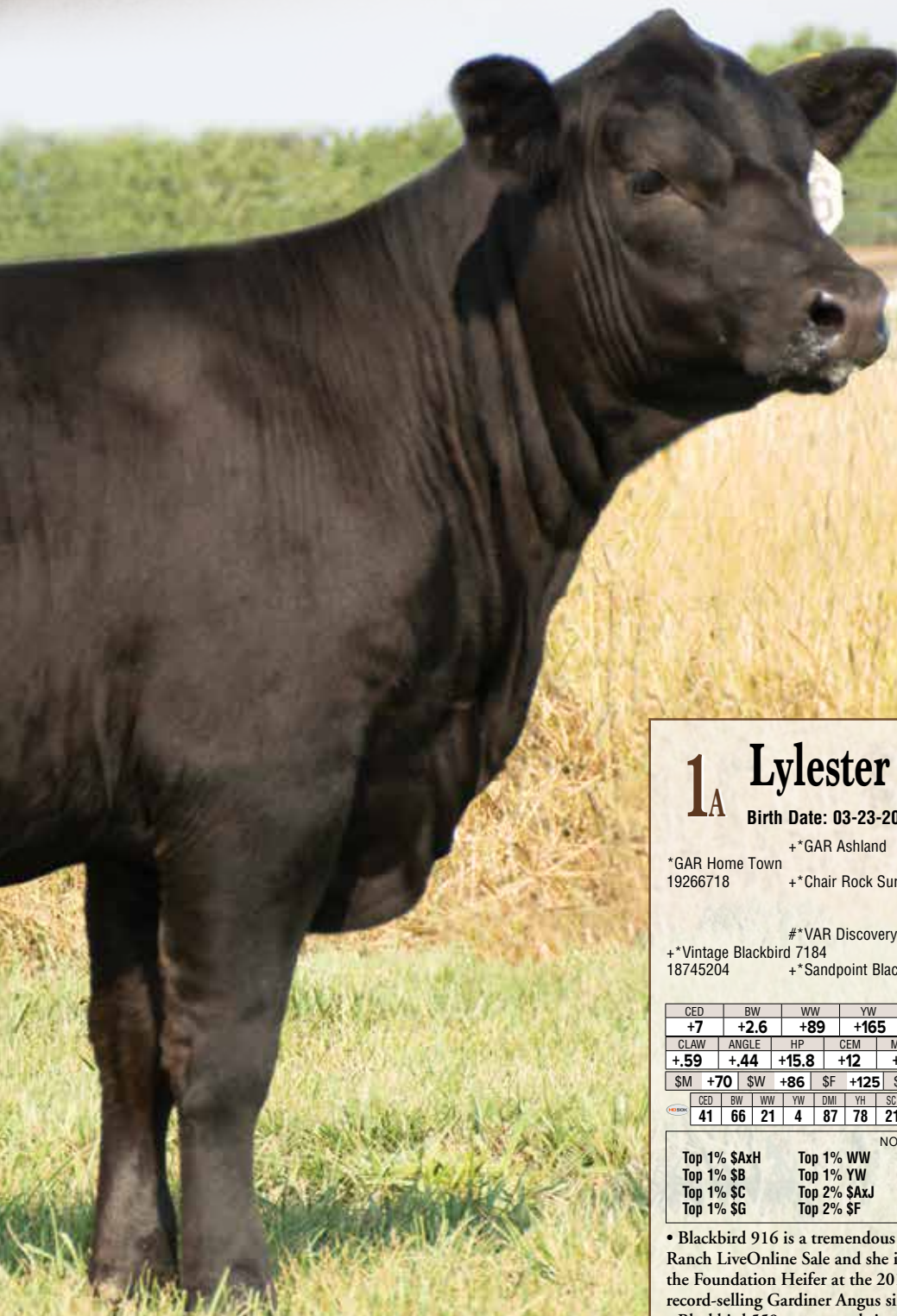
LE

Blackbird 916

LE



Cam



1^A Lylester Blackbird 916

Birth Date: 03-23-2021

Cow +*20039789

Tattoo: 916

+*GAR Ashland

*GAR Early Bird

*GAR Home Town
19266718

+*Chair Rock Sure Fire 6095

+*Chair Rock Ambush 1018

+*GAR Sure Fire

+*Chair Rock Progress 3005

#*VAR Discovery 2240

#*AAR Ten X 7008 SA

+*Vintage Blackbird 7184

+*Deer Valley Rita 0308

18745204

+*Sandpoint Blackbird 8809

#*Connealy Onward

+Riverbend Blackbird 4301

CED	BW	WW	YW	RADG	DMI	YH	SC	DOC	PAP						
+7	+2.6	+89	+165	+3.4	+1.99	+8	+1.40	+25	+1.99						
CLAW	ANGLE	HP	CEM	MILK	MW	MH	CW	MARB	RE	FAT					
+59	+44	+15.8	+12	+27	+121	+8	+74	+1.26	+1.06	-.048					
\$M	+70	\$W	+86	\$F	+125	\$G	+88	\$B	+213	\$C	+346	\$AxH	+227	\$AxJ	+222

CED	BW	WW	YW	DMI	YH	SC	DOC	HP	CEM	MILK	MW	MH	CW	MB	REA	FAT	TEND
41	66	21	4	87	78	21	22	7	10	57	17	55	17	4	11	2	33

NON-PARENT FEMALES

Top 1% \$AxH	Top 1% WW	Top 2% Fat	Top 4% CWT	Top 20% Doc
Top 1% \$B	Top 1% YW	Top 2% RADG	Top 4% REA	Top 20% SC
Top 1% \$C	Top 2% \$AxJ	Top 3% Marb	Top 15% CEM	
Top 1% \$G	Top 2% \$F	Top 4% \$W	Top 15% HPreg	

• Blackbird 916 is a tremendous multi-trait prospect to lead-off the 2021 Lylester Ranch LiveOnline Sale and she is a direct daughter of the selection of Lylester as the Foundation Heifer at the 2018 National Western, Blackbird 7184 sired by the record-selling Gardiner Angus sire, Home Town.

• Blackbird 559, a maternal sister to this exciting prospect was the \$20,000 lead-off selection of Vintage Angus Ranch in the 2020 Lylester Ranch LiveOnline Sale.



Lylester Blackbird 657 / Lot 1B

1_B Lylester Blackbird 657

Birth Date: 08-09-2020

Cow +*19887073

Tattoo: 657

*GB Fireball 672
18690054

+*GAR Sure Fire 6404
*GB Anticipation 432

+*GAR Sure Fire
+*GAR Complete N281
*GAR Anticipation
GB Ambush 269

+*Vintage Blackbird 7184
18745204

#*VAR Discovery 2240
+*Sandpoint Blackbird 8809

#*AAR Ten X 7008 SA
+*Deer Valley Rita 0308
#*Connealy Onward
+Riverbend Blackbird 4301

CED	BW	WW	YW	RADG	DMI	YH	SC	DOC	PAP								
+10	+2.0	+79	+143	+31	+1.58	+1.0	+1.36	+34	-.06								
CLAW	ANGLE	HP	CEM	MILK	MW	MH	CW	MARB	RE	FAT							
+53	+49	+10.0	+12	+26	+102	+9	+61	+1.64	+76	-.028							
\$M	+61	\$W	+78	\$F	+108	\$G	+99	\$B	+207	\$C	+329	\$AxH	+184	\$AxJ	+164		
CED	BW	WW	YW	DMI	YH	SC	DOC	HP	CEM	MILK	MW	MH	CW	MB	REA	FAT	TEND
42	66	24	8	87	21	9	1	55	20	51	15	25	13	1	16	2	93

NON-PARENT FEMALES

Top 1% \$B	Top 1% Marb	Top 10% \$F	Top 15% \$AxJ	Top 20% SC
Top 1% \$C	Top 4% YW	Top 10% \$W	Top 15% CEM	Top 20% PAP
Top 1% \$G	Top 5% WW	Top 10% Fat	Top 20% CED	
Top 1% Doc	Top 10% \$AxH	Top 10% RADG	Top 20% CWT	

Blackbird 657 is an outstanding fall yearling produced by the Lylester Ranch foundation Blackbird, Blackbird 7184 sired by the calving-ease and Marb. specialist, Fireball 672.

• Maternal sisters to Lot 1B include: the females selling as Lots 1A and 1C; and Blackbird 559, the \$20,000 lead-off female of the 2020 Lylester Ranch LiveOnline Sale selected by Vintage Angus Ranch.

Lylester Ranch Sale hosted by





Lylester Blackbird 862 / Lot 1C

1c Lylester Blackbird 862

Birth Date: 01-05-2021

Cow +*19962964

Tattoo: 862

*GAR Inertia
18745204*GAR Momentum
+*GAR Prophet 2984#*GAR Progress
+GAR Big Eye 1770
#*GAR Prophet
+GAR Daybreak 1521+*VAR Discovery 2240
+*Vintage Blackbird 7184
18745204 +*Sandpoint Blackbird 8809#*AAR Ten X 7008 SA
+*Deer Valley Rita 0308
#*Connealy Onward
+Riverbend Blackbird 4301

CED	BW	WW	YW	RADG	DMI	YH	SC	DOC	PAP						
+8	+2.0	+75	+145	+31	+1.97	+7	+1.55	+24	+2.77						
CLAW	ANGLE	HP	CEM	MILK	MW	MH	CW	MARB	RE	FAT					
+62	+54	+8.9	+10	+23	+91	+8	+68	+1.32	+87	-.012					
\$M	+49	\$W	+70	\$F	+123	\$G	+85	\$B	+208	\$C	+319	\$AxH	+213	\$AxJ	+209

\$M	+49	\$W	+70	\$F	+123	\$G	+85	\$B	+208	\$C	+319	\$AxH	+213	\$AxJ	+209
-----	-----	-----	-----	-----	------	-----	-----	-----	------	-----	------	-------	------	-------	------

CED	BW	WW	YW	DMI	YH	SC	DOC	HP	CEM	MILK	MW	MH	CW	MB	REA	FAT	TEND
79	88	24	2	89	61	9	23	80	52	79	20	33	12	2	14	16	52

NON-PARENT FEMALES

Top 1% \$B	Top 2% \$F	Top 10% CWT	Top 15% SC
Top 1% \$G	Top 2% Marb	Top 10% RADG	Top 20% Doc
Top 2% \$AxH	Top 3% \$AxJ	Top 10% WW	Top 25% \$W
Top 2% \$C	Top 4% YW	Top 15% REA	Top 25% Fat

- Blackbird 862 is a balanced-trait Marbling prospect produced by the Lylester Ranch donor, Blackbird 7184 and sired by the proven female sire, Inertia.
- Maternal sisters to Lot 1C include: the females selling as Lots 1A and 1B; and Blackbird 559, the \$20,000 lead-off female of the 2020 Lylester Ranch LiveOnline Sale selected by Vintage Angus Ranch.



Lylester Blackbird 559 / The \$20,000 maternal sister to Lots 1A through 1C selected by Vintage Angus Ranch in the first Lylester LiveOnline sale.



Lylester First Lady 667 / Lot 2A

2A Lylester First Lady 667

Birth Date: 08-11-2020 Cow #*19876706 Tattoo: 667

+*PA Valor 201 #*B/R New Day 454
 +*SCC Tenacity 8102 +*COR Blackcap 6224 Z38 Midlnd
 19317804 +*Raven Blackbird 2183 #*PA Power Tool 9108
 #Raven Blackbird 315

#*Quaker Hill Rampage 0A36 #MCC Daybreak
 +*Vintage First Lady 7077 +*QHF Blackcap 6E2 of4V16 4355
 18713016 +*Vintage First Lady 4389 #*VAR Discovery 2240
 +*Three Trees First Lady 6108

CED	BW	WW	YW	RADG	DMI	YH	SC	DOC	PAP						
+9	+1.3	+92	+170	+37	+2.17	+1.0	+1.46	+16	-.19						
CLAW	ANGLE	HP	CEM	MILK	MW	MH	CW	MARB	RE	FAT					
+56	+62	+14.1	+10	+32	+116	+1.1	+79	+1.14	+1.46	-.033					
\$M	+62	\$W	+99	\$F	+126	\$G	+86	\$B	+212	\$C	+337	\$AxH	+226	\$AxJ	+244

CED	BW	WW	YW	DMI	YH	SC	DOC	HP	CEM	MILK	MW	MH	CW	MB	REA	FAT	TEND
46	59	4	1	98	29	11	64	16	45	22	7	11	2	6	1	13	74

NON-PARENT FEMALES

Top 1% \$AxH	Top 1% \$G	Top 1% WW	Top 10% Fat	Top 25% HPreg
Top 1% \$AxJ	Top 1% \$W	Top 1% YW	Top 10% Marb	Top 20% PAP
Top 1% \$B	Top 1% RADG	Top 2% \$F	Top 10% Milk	
Top 1% \$C	Top 1% REA	Top 2% CWT	Top 15% SC	

• First Lady 667 is ONLY non-parent female in the breed with her combination of BW, WW, YW, Marb., RE, \$M, \$B and \$C.

• First Lady 667 is a powerful growth and RE prospect produced by the \$240,000 valued feature of the feed efficiency leading First Lady family, First Lady 7077 sired by the outcross growth sire in the Simons Cattle Company and Wilks Ranch programs, Tenacity 8102.

Featuring two daughters of the cornerstone of the feed efficiency leading Lady family in the Lylester program, First Lady 7077 sired by the outcross growth sire, Tenacity 8102 and the now-deceased No Doubt.

• The dam of Lots 2A and 2B was the \$240,000 valued fourth high-selling open heifer of the 2017 Vintage Angus Sale and blends the multi-trait leader, Rampage with the powerful daughter of the \$110,000 Discovery. Maternal sisters to the dam of these prospects include: First Lady 7013, the \$140,000 valued fifth high-selling open heifer of the 2017 Vintage Angus Sale selected by Rooney Angus Ranch; First Lady 7414, the \$65,000 top-selling fall pair of the 2019 Vintage Angus Sale selling to Dixie Farms; First Lady 8470, the \$40,000 selection of Circle G Ranches in that offering; First Lady 8584 selling in that event to Wall Street Cattle Company; First Lady 8500 selected by GDD Angus in the 2019 Vintage Angus Sale; and First Lady 8049 and First Lady 8233 selling in that event to Trukenbroad Brothers.

• Maternal sisters to these outstanding prospects include: First Lady 9133, the \$34,000 second high-selling open heifer of the 2019 Spring Grove Ranch Sale selected by Vintage Angus Ranch; First Lady 9113, the \$22,000 third high-selling open heifer of that offering selling to Crazy K Ranch; and First Lady 557, the \$17,000 selection of Vintage Angus Ranch in the 2020 Lylester Ranch LiveOnline Sale.

Lylester Ranch Sale hosted by





Lylester First Lady 688 / Lot 2B

2_B Lylester First Lady 688

Birth Date: 08-18-2020

Cow +*19876709 Tattoo: 688

#*Mogck Bullseye
+*Hoover No Doubt
17882682 *Miss Blackcap Ellston J2

#MOGCK Sure Shot
Mogck Mary 1255
#*SydGen CC&7
#Miss Blackcap Ellston D154

#+*Quaker Hill Rampage 0A36
+*Vintage First Lady 7077
18713016 +*Vintage First Lady 4389

#MCC Daybreak
+*QHF Blackcap 6E2 of 4V16 4355
#*VAR Discovery 2240
+*Three Trees First Lady 6108

CED	BW	WW	YW	RADG	DMI	YH	SC	DOC	PAP								
-1	+4.1	+84	+156	+30	+2.47	+7	+1.67	+22	+3.63								
CLAW	ANGLE	HP	CEM	MILK	MW	MH	CW	MARB	RE	FAT							
+38	+38	+7.2	+11	+22	+116	+8	+87	+87	+1.31	-.019							
\$M	+51	\$W	+70	\$F	+136	\$G	+71	\$B	+208	\$C	+321	\$AxH	+200	\$AxJ	+206		
CE	BW	WW	YW	DMI	YH	SC	DOC	HP	CEM	MILK	MW	MH	CW	MARB	REA	FAT	TEND
86	84	10	5	100	47	15	30	81	5	67	6	29	1	33	1	9	89

NON-PARENT FEMALES

Top 1% \$B	Top 1% REA	Top 4% \$AxH	Top 15% RADG
Top 1% \$C	Top 2% YW	Top 10% \$G	Top 25% \$W
Top 1% \$F	Top 3% \$AxJ	Top 10% SC	Top 25% CEM
Top 1% CWT	Top 3% WW	Top 15% Fat	Top 25% Marb

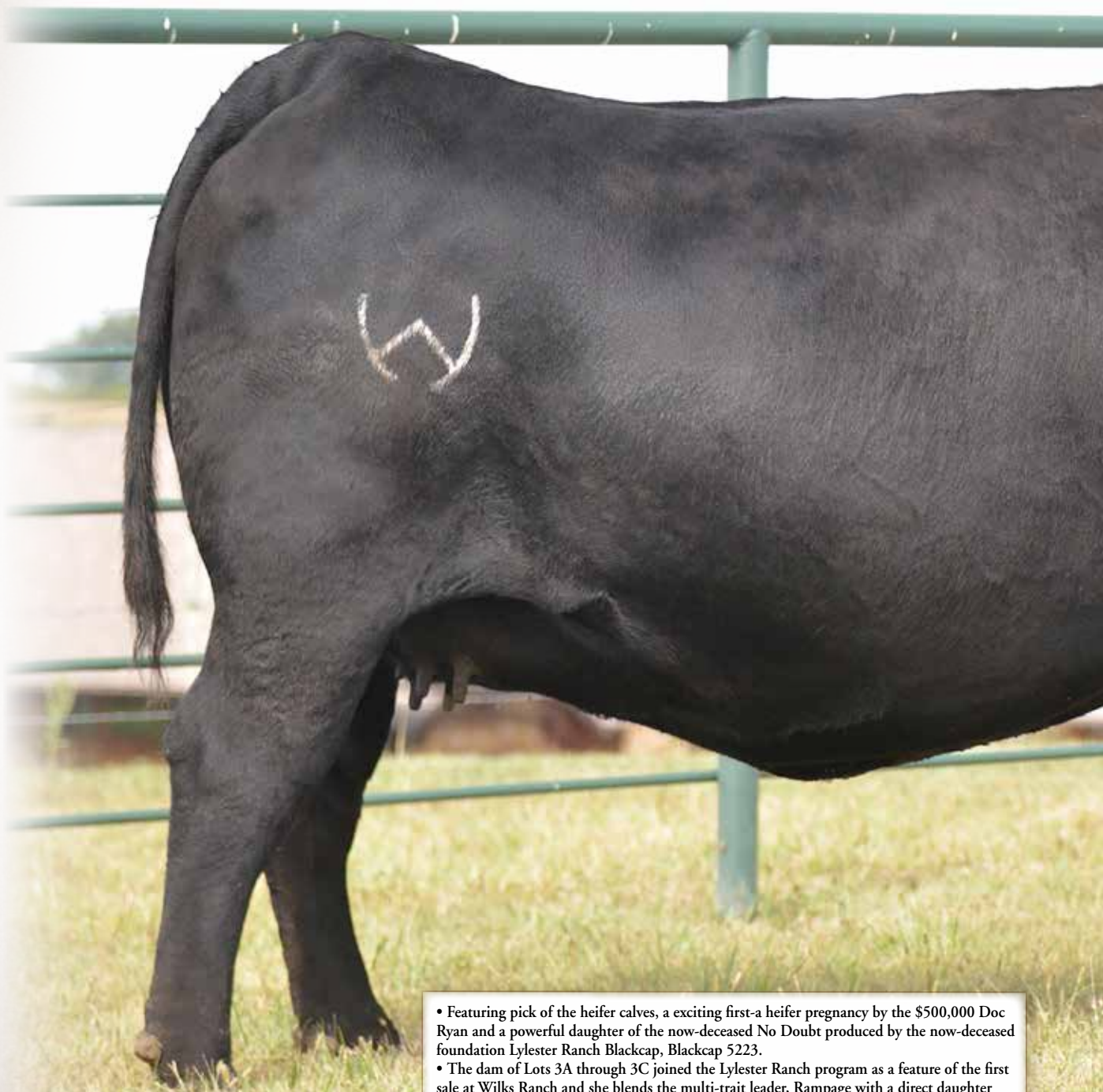
• First Lady 688 is a powerful fall yearling produced by the \$240,000 valued First Lady 7077 and sired by the popular now-deceased Spruce Mountain Ranch headliner, No Doubt.



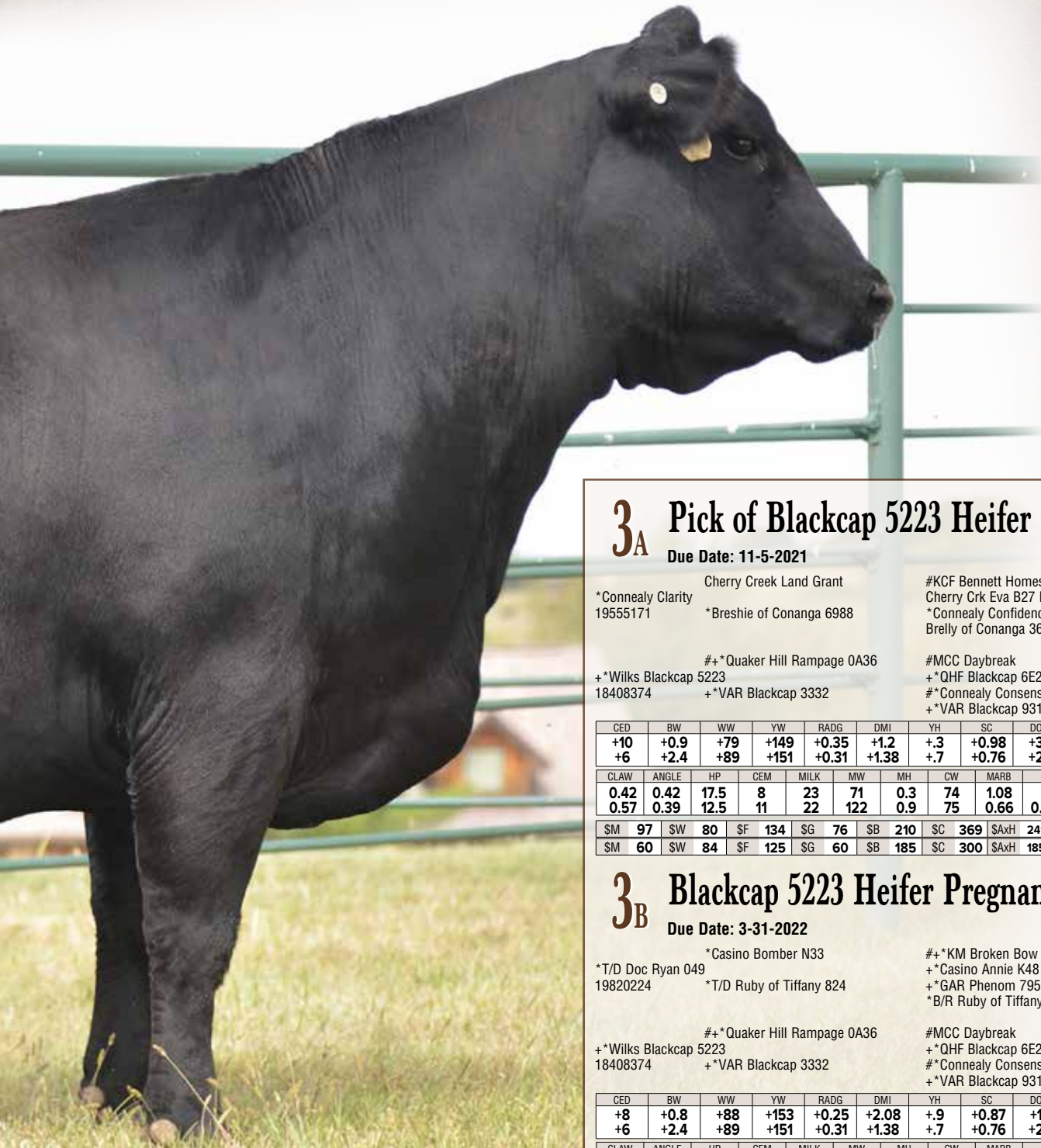
Vintage First Lady 7077 / Daughters of this foundation member of the feed efficiency leading Lady family in the Lylester program sell as Lots 2A and 2B.

Lylester Ranch Sale hosted by





- Featuring pick of the heifer calves, a exciting first-a heifer pregnancy by the \$500,000 Doc Ryan and a powerful daughter of the now-deceased No Doubt produced by the now-deceased foundation Lylester Ranch Blackcap, Blackcap 5223.
- The dam of Lots 3A through 3C joined the Lylester Ranch program as a feature of the first sale at Wilks Ranch and she blends the multi-trait leader, Rampage with a direct daughter of the prolific Vintage Angus and Schnoor Sisters donor, Blackcap 9319 by the cornerstone female sire, Consensus.
- Progeny from the dam of Lots 3A through 3C headlined the 2020 Lylester Ranch LiveOnline Sale and include: Blackcap 473, the \$38,000 selection of Edisto Pines Farm; Blackcap 627, the \$14,000 selection of Pollard Farms; Blackcap 381 selected by Wilks Ranch for \$7,000; and Blackcap 540 selling to Hollman Angus for \$6,000.



3_A Pick of Blackcap 5223 Heifer Calves

Due Date: 11-5-2021

*Connealy Clarity
19555171

Cherry Creek Land Grant
*Breshie of Conanga 6988

#KCF Bennett Homestead
Cherry Crk Eva B27 M
*Connealy Confidence Plus
Brelly of Conanga 367

#+*Quaker Hill Rampage 0A36
+*Wilks Blackcap 5223
18408374

+*VAR Blackcap 3332

#MCC Daybreak
+*QHF Blackcap 6E2 of 4V16 4355
#*Connealy Consensus 7229
+*VAR Blackcap 9319

CED	BW	WW	YW	RADG	DMI	YH	SC	DOC	PAP						
+10	+0.9	+79	+149	+0.35	+1.2	+3	+0.98	+36	+5.64						
+6	+2.4	+89	+151	+0.31	+1.38	+7	+0.76	+20	+1.4						
CLAW	ANGLE	HP	CEM	MILK	MW	MH	CW	MARB	RE	FAT					
0.42	0.42	17.5	8	23	71	0.3	74	1.08	1	-0.011					
0.57	0.39	12.5	8	22	122	0.9	75	0.66	0.99	-0.044					
\$M	97	\$W	80	\$F	134	\$G	76	\$B	210	\$C	369	\$AxH	241	\$AxJ	223
\$M	60	\$W	84	\$F	125	\$G	60	\$B	185	\$C	300	\$AxH	185	\$AxJ	174

3_B Blackcap 5223 Heifer Pregnancy

Due Date: 3-31-2022

*T/D Doc Ryan 049
19820224

*Casino Bomber N33
*T/D Ruby of Tiffany 824

#+*KM Broken Bow 002V
+*Casino Annie K48
+*GAR Phenom 7953
*B/R Ruby of Tiffany 688

#+*Quaker Hill Rampage 0A36
+*Wilks Blackcap 5223
18408374

+*VAR Blackcap 3332

#MCC Daybreak
+*QHF Blackcap 6E2 of 4V16 4355
#*Connealy Consensus 7229
+*VAR Blackcap 9319

CED	BW	WW	YW	RADG	DMI	YH	SC	DOC	PAP						
+8	+0.8	+88	+153	+0.25	+2.08	+9	+0.87	+18	+0.47						
+6	+2.4	+89	+151	+0.31	+1.38	+7	+0.76	+20	+1.4						
CLAW	ANGLE	HP	CEM	MILK	MW	MH	CW	MARB	RE	FAT					
0.5	0.5	13.5	11	26	110	0.9	82	1.14	0.98	0.031					
0.57	0.39	12.5	11	22	122	0.9	75	0.66	0.99	-0.044					
\$M	66	\$W	91	\$F	126	\$G	75	\$B	201	\$C	327	\$AxH	202	\$AxJ	216
\$M	60	\$W	84	\$F	125	\$G	60	\$B	185	\$C	300	\$AxH	185	\$AxJ	174

DONOR - PROVEN FEMALES

Top 1% \$B	Top 1% CWT	Top 2% \$W	Top 3% REA	Top 10% \$G
Top 1% \$C	Top 1% WW	Top 2% Fat	Top 10% \$AxH	Top 20% CEM
Top 1% \$F	Top 1% YW	Top 2% RADG	Top 10% \$AxJ	



Lylester Blackcap 666 / Lot 3C

3c Lylester Blackcap 666

Birth Date: 08-11-2020

Cow +*19885077 Tattoo: 666

#*Mogck Bullseye

#MOGCK Sure Shot

+*Hoover No Doubt
17882682

*Miss Blackcap Ellston J2

Mogck Mary 1255

#*SydGen CC&7

#Miss Blackcap Ellston D154

#*Quaker Hill Rampage OA36

#MCC Daybreak

+*Wilks Blackcap 5223

+*QHF Blackcap 6E2 of4V16 4355

18408374

+*VAR Blackcap 3332

#*Connealy Consensus 7229

+*VAR Blackcap 9319

CED	BW	WW	YW	RADG	DMI	YH	SC	DOC	PAP	
+3	+3.4	+75	+139	+31	+1.66	+4	+1.54	+23	+1.79	
CLAW	ANGLE	HP	CEM	MILK	MW	MH	CW	MARB	RE	FAT
+52	+45	+9.9	+9	+18	+96	+5	+79	+88	+1.15	+0
\$M	\$F	\$G	\$B	\$C	\$A	\$H	\$J	\$K	\$L	\$M
+51	+60	+136	+68	+204	+316	+211	+201			

CED	BW	WW	YW	DMI	YH	SC	DOC	HP	CEM	MILK	MW	MH	CW	MB	REA	FAT	TEND
58	69	23	8	91	82	16	28	57	38	95	10	44	8	29	3	29	72

NON-PARENT FEMALES

Top 1% \$B	Top 2% \$C	Top 4% \$AxJ	Top 10% WW	Top 25% Doc
Top 1% \$F	Top 2% CWT	Top 10% \$G	Top 10% YW	Top 25% Marb
Top 2% \$AxH	Top 2% REA	Top 10% RADG	Top 15% SC	

- Blackcap 666 is a direct daughter of the prolific now-deceased, foundation Blackcap in the Lylester Ranch program, Blackcap 5223 sired by the now-deceased No Doubt.
- The dam of Lot 3 joined the Lylester Ranch program as a feature of the first sale at Wilks Ranch and she blends the multi-trait leader, Rampage with a direct daughter of the prolific Vintage Angus and Schnoor Sisters donor, Blackcap 9319 by the cornerstone female sire, Consensus.
- Maternal sisters to Blackcap 666 headlined the 2020 Lylester Ranch LiveOnline Sale and include: Blackcap 473, the \$38,000 selection of Edisto Pines Farm; Blackcap 627, the \$14,000 selection of Pollard Farms; Blackcap 381 selected by Wilks Ranch for \$7,000; and Blackcap 540 selling to Hollman Angus for \$6,000.

Lylester Ranch Sale hosted by





Lylester Chloe 939 / Lot 4



Lylester Chloe 418 /
The \$20,000 maternal sister to Lot 4
selected by Soaring Eagle Farms in
the first Lylester LiveOnline sale.

4 Lylester Chloe 939

Birth Date: 03-29-2021

Cow *20039817

Tattoo: 939

+*GAR Ashland
*GAR Home Town
19266718 +*Chair Rock Sure Fire 6095

#*VAR Discovery 2240
+*DCF Chloe 5769
18484962 EXAR Chloe 2385

*GAR Early Bird
+*Chair Rock Ambush 1018
+*GAR Sure Fire
+*Chair Rock Progress 3005

#*AAR Ten X 7008 SA
+*Deer Valley Rita 0308
#*Connealy Consensus 7229
EXAR Chloe 0601

CED	BW	WW	YW	RADG	DMI	YH	SC	DOC	PAP								
+12	+9	+75	+147	+36	+1.51	+5	+1.41	+23	+1.26								
CLAW	ANGLE	HP	CEM	MILK	MW	MH	CW	MARB	RE	FAT							
+65	+58	+14.1	+13	+27	+106	+6	+59	+1.55	+1.05	-.026							
\$M	+54	\$W	+75	\$F	+115	\$G	+99	\$B	+213	\$C	+330	\$AxH	+241	\$AxJ	+220		
13	36	53	6	63	95	15	23	26	29	48	26	70	36	1	5	5	81

NON-PARENT FEMALES

Top 1% \$AxH	Top 1% Marb	Top 4% REA	Top 10% Fat	Top 20% SC
Top 1% \$B	Top 1% RADG	Top 5% \$F	Top 10% WW	Top 25% Doc
Top 1% \$C	Top 2% \$AxJ	Top 10% CED	Top 15% \$W	Top 25% HPreg
Top 1% \$G	Top 3% YW	Top 10% CEM	Top 20% CWT	

- Chloe 939 is a direct daughter of the \$60,000 valued headliner of the herd sire producing Chloe family in the Lylester and Vintage Angus joint embryo programs, Chloe 5769 sired by the record-selling multi-trait sire, Home Town.
- The dam of Lot 4 combines the foundation female sires Discovery and Consensus with a daughter of the Pathfinder Sire, 263C and stems from the \$250,000 valued former 44 Farms and Express Ranches herd sire producer, Chloe 812L.
- Maternal sisters to Lot 4 include: Chloe 9071, the \$140,000 valued half interest selection of Audley Farm in the 2020 Spruce Mountain Ranch Sale; Chloe 9058, the \$120,000 top-selling female of the 2020 Pollard Farms Sale selected by Spruce Mountain Ranch; Chloe 9009, the \$40,000 top-selling bred heifer selection of AAA Farms in the 2020 Vintage Angus Sale; Chloe 418, the \$20,000 selection of Soaring Eagle Farms in the 2020 Lylester Ranch LiveOnline Sale; the \$20,000 top-selling heifer pregnancy of the 2018 Lylester Ranch Sale selected by Pollard Farms; and a \$15,000 heifer pregnancy selling in that offering to Express Ranches.

Lylester Ranch Sale hosted by



LE

Chloe 7460

LE



Cam



Offering this special highlight, the foundation Chloe in the Lylester Ranch program, Chloe 7460

5 EZAR Chloe 7460

Birth Date: 08-6-2006

Cow *19108161

Tattoo: 7460

#+*Basin Payweight 1682
*Basin Paycheck 5249
18184147

*Basin Lucy 3150

#+*Basin Payweight 006S
21AR O Lass 7017
#Basin Rainmaker P175
+*Basin Lucy 1667

*Basin Advance 3134
*EZAR Chloe 5087
18333940

+*VAR Chloe 1237

#+*GAR Progress
+*Basin O Lass 1663
#Sitz Upward 307R
+44 Chloe 7056

CED	BW	WW	YW	RADG	DMI	YH	SC	DOC	PAP						
+11	+2	+63	+114	+26	+74	+2	+68	+18	-.31						
CLAW	ANGLE	HP	CEM	MILK	MW	MH	CW	MARB	RE	FAT					
+40	+44	+10	+11	+29	+58	+0	+54	+1.29	+45	+0.69					
\$M	+65	\$W	+72	\$F	+107	\$G	+72	\$B	+179	\$C	+297	\$AxH	155	\$AxJ	103

CED	BW	WW	YW	DMI	YH	SC	DOC	HP	CEM	MILK	MW	MH	CW	MB	REA	FAT	TEND
19	23	53	45	48	82	62	52	77	50	18	48	84	34	4	82	99	73

NON-PARENT FEMALES

Top 2% \$B	Top 10% \$F	Top 15% PAP	Top 20% WW
Top 2% \$C	Top 10% CWT	Top 20% \$AxH	Top 20% YW
Top 2% Marb	Top 15% \$W	Top 20% CEM	Top 25% BW
Top 3% \$G	Top 15% CED	Top 20% RADG	Top 25% Milk

- Chloe 7460 was selected to serve as the foundation Chloe in the Lylester Ranch program and anchor the herd sire producing Chloe family.
- Chloe 7460, joined the Lylester Ranch program as a headliner of the first EZ Angus sale and she combines the featured EZ Angus female sire, Paycheck 5249 with a daughter of the maternal sire in the EZ Angus and Express Ranches programs, Advance 3134.
- Has a 1/12/21 heifer calf, Lot 5A, by TCA Eastwood.
- Has a 10/30/20 heifer calf, Lot 5B, by SCC Tenacity 8102
- Open and ready to flush. Flushed two times, with 14 viable embryos.



Lylester Chloe 871 / Lot 5A

5A Lylester Chloe 871

Birth Date: 01-12-2021 Cow *19961676 Tattoo: 871

*TCA Eastwood
19531687

*Jindra Acclaim
*TCA Marquis Treasure 711

*Jindra 3rd Dimension
*Jindra Blackbird Lassie 1111
+*Pine View Marquis P154
*TCA Accrue Treasure 511

*EZAR Chloe 7460
19108161

*Basin Paycheck 5249
*EZAR Chloe 5087

#+*Basin Payweight 1682
*Basin Lucy 3150
*Basin Advance 3134
+*VAR Chloe 1237

CED	BW	WW	YW	RADG	DMI	YH	SC	DOC	PAP								
+3	+1.6	+69	+133	+33	+1.14	+5	+29	+26	-2.02								
CLAW	ANGLE	HP	CEM	MILK	MW	MH	CW	MARB	RE	FAT							
+48	+45	+11.7	+6	+21	+81	+5	+63	+1.63	+26	+0.38							
\$M	+60	\$W	+63	\$F	+121	\$G	+87	\$B	+208	\$C	+330	\$AxH	+121	\$AxJ	+85		
CED	BW	WW	YW	DMI	YH	SC	DOC	HP	CEM	MILK	MW	MH	CW	MB	REA	FAT	TEND
78	56	29	11	73	60	84	16	44	74	86	41	55	15	1	93	91	56

NON-PARENT FEMALES

Top 1% \$B	Top 1% Marb	Top 4% RADG	Top 15% Doc
Top 1% \$C	Top 2% PAP	Top 10% YW	Top 20% WW
Top 1% \$G	Top 3% \$F	Top 15% CWT	



EZAR Chloe 7460 / Dam of Lots 5A and 5B.

• Chloe 871 is a tremendous Marb. and \$C prospect produced by the selection of Lylester Ranch in the first EZ Angus sale, Chloe 7460 and sired by the proven \$C leader, Eastwood.



Lylester Chloe 819 / Lot 5B

5_B Lylester Chloe 819

Birth Date: 10-30-2020

Cow +*19961686

Tattoo: 819

+*SCC Tenacity 8102
19317804

+*PA Valor 201

+*Raven Blackbird 2183

*EZAR Chloe 7460
19108161

*Basin Paycheck 5249

*EZAR Chloe 5087

#*B/R New Day 454
+*COR Blackcap 6224 Z38 MidInd
#*PA Power Tool 9108
#Raven Blackbird 315

#+*Basin Payweight 1682
*Basin Lucy 3150
*Basin Advance 3134
+*VAR Chloe 1237

CED	BW	WW	YW	RADG	DMI	YH	SC	DOC	PAP								
+8	+1.8	+82	+144	+31	+1.46	+8	+87	+20	-1.52								
CLAW	ANGLE	HP	CEM	MILK	MW	MH	CW	MARB	RE	FAT							
+31	+42	+73	+6	+30	+74	+7	+67	+1.08	+90	-.013							
\$M	+71	\$W	+91	\$F	+114	\$G	+75	\$B	+189	\$C	+316	\$AxH	+185	\$AxJ	+175		
CED	BW	WW	YW	DMI	YH	SC	DOC	HP	CEM	MILK	MW	MH	CW	MB	REA	FAT	TEND
68	72	5	9	88	24	42	45	83	86	21	23	23	5	11	9	20	86

NON-PARENT FEMALES

Top 2% \$C	Top 3% PAP	Top 10% \$AxH	Top 10% RADG	Top 25% \$M
Top 2% \$W	Top 4% WW	Top 10% \$AxJ	Top 15% REA	
Top 3% \$B	Top 4% YW	Top 10% CWT	Top 20% Fat	
Top 3% \$G	Top 5% \$F	Top 10% Marb	Top 20% Milk	

Featuring two daughters of the foundation Chloe in the Lylester Ranch program, Chloe 7460 sired by the proven \$C sire, Eastwood and the growth and RE sire, Tenacity 8102.

• Chloe 7460, the dam of Lots 5A and 5B joined the Lylester Ranch program as a headliner of the first EZ Angus sale and she combines the featured EZ Angus female sire, Paycheck 5249 with a daughter of the maternal sire in the EZ Angus and Express Ranches programs, Advance 3134.

• Chloe 819 is a growth, carcass and \$C prospect produced by the Lylester Ranch Chloe, Chloe 7460 and sired by the outcross growth sire in the Simons Cattle Company and Wilks Ranch programs, Tenacity 8102.

Lylester Ranch Sale hosted by



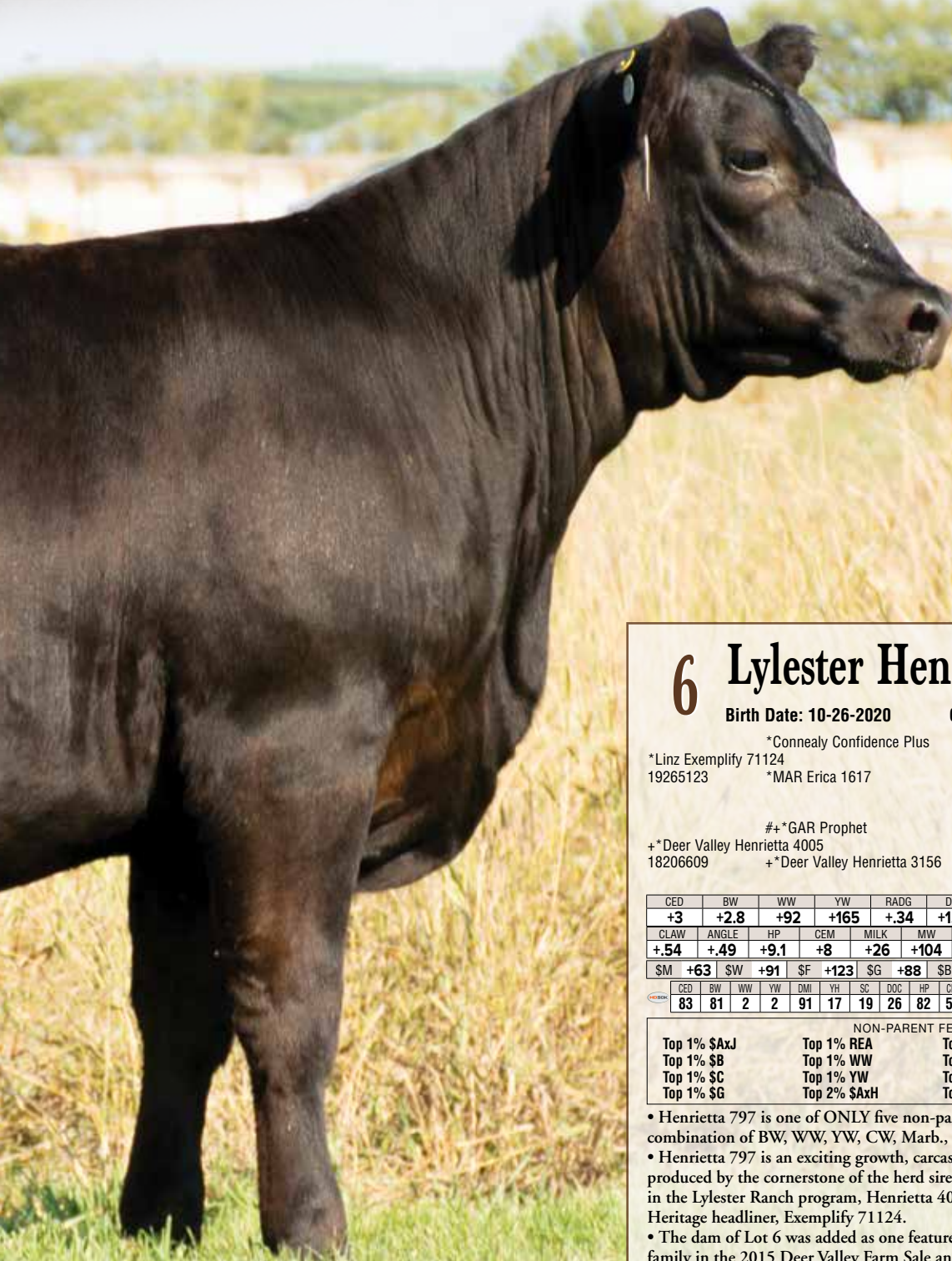
LE

Henrietta 797

LE



Cam



6 Lylester Henrietta 797

Birth Date: 10-26-2020 Cow +*19946661 Tattoo: 797

*Connealy Confidence Plus
*Linz Exemplify 71124
19265123 *MAR Erica 1617

#*Connealy Confidence 0100
Elbanna of Conanga 1209
#+*RB Tour Of Duty 177
+*MAR Erica Rito 1402

#+*GAR Prophet
+*Deer Valley Henrietta 4005
18206609 +*Deer Valley Henrietta 3156

#CRA Bextor 872 5205 608
+GAR Objective 1885
#*Summitcrest Complete 1P55
+Sitz Henrietta Pride 643T

CED	BW	WW	YW	RADG	DMI	YH	SC	DOC	PAP						
+3	+2.8	+92	+165	+34	+1.85	+1.0	+1.27	+26	+2.69						
CLAW	ANGLE	HP	CEM	MILK	MW	MH	CW	MARB	RE	FAT					
+54	+49	+9.1	+8	+26	+104	+9	+79	+1.24	+1.28	-.029					
\$M	+63	\$W	+91	\$F	+123	\$G	+88	\$B	+211	\$C	+337	\$AxH	+216	\$AxJ	+231

CED	BW	WW	YW	DMI	YH	SC	DOC	HP	CEM	MILK	MW	MH	CW	MB	REA	FAT	TEND
83	81	2	2	91	17	19	26	82	57	73	9	12	3	4	1	5	22

NON-PARENT FEMALES

Top 1% \$AxJ	Top 1% REA	Top 2% \$F	Top 4% Marb
Top 1% \$B	Top 1% WW	Top 2% \$W	Top 10% Fat
Top 1% \$C	Top 1% YW	Top 2% CWT	Top 15% Doc
Top 1% \$G	Top 2% \$AxH	Top 2% RADG	Top 25% SC

- Henrietta 797 is one of ONLY five non-parent females in the breed with her combination of BW, WW, YW, CW, Marb., RE, \$W, \$B and \$C.
- Henrietta 797 is an exciting growth, carcass, \$B and \$C combination female produced by the cornerstone of the herd sire producing Henrietta Pride family in the Lylester Ranch program, Henrietta 4005 and sired by the \$150,000 Linz Heritage headliner, Exemplify 71124.
- The dam of Lot 6 was added as one featured members of the Henrietta Pride family in the 2015 Deer Valley Farm Sale and blends the proven growth and Marb. sire in the Select Sires roster, Prophet with a direct daughter of the \$6.5 million producer, Henrietta Pride 643T by the now-deceased RE sire, Complete.



Lylester Rita 786 / Lot 7

7 Lylester Rita 786

Birth Date: 10-20-2020

Cow *19942904

Tattoo: 786

*GB Fireball 672
18690054

+*GAR Sure Fire 6404

*GB Anticipation 432

+*RMRK Rita 8909
19369705

+*VAR Legend 5019

+*CoX Rita 27R Y05C

+*GAR Sure Fire

+*GAR Complete N281

*GAR Anticipation
GB Ambush 269

#*VAR Discovery 2240

+*PF CC&7 Henrietta Pride 1044

*Callaways Cure All 1353

+*SQ 27R of 3540 FD

CED	BW	WW	YW	RADG	DMI	YH	SC	DOC	PAP						
+9	+1.8	+82	+145	+31	+1.21	+5	+59	+24	+12						
CLAW	ANGLE	HP	CEM	MILK	MW	MH	CW	MARB	RE	FAT					
+46	+41	+10.0	+12	+22	+68	+1	+54	+1.47	+1.08	+0.15					
\$M	+79	\$W	+83	\$F	+97	\$G	+92	\$B	+189	\$C	+324	\$AXH	+216	\$AXJ	+203

CED	BW	WW	YW	DMI	YH	SC	DOC	HP	CEM	MILK	MW	MH	CW	MB	REA	FAT	TEND
32	50	27	22	52	75	49	34	45	29	74	75	94	41	1	5	53	75

NON-PARENT FEMALES

Top 1% \$C	Top 3% \$B	Top 4% YW	Top 15% CEM
Top 1% \$G	Top 3% REA	Top 10% \$M	Top 20% Doc
Top 1% Marb	Top 4% \$A	Top 10% \$W	Top 25% \$F
Top 2% \$A	Top 4% WW	Top 10% RADG	Top 25% PAP

• Will sell with Angus Registered #18515996.

Rita 786 is a balanced-trait female produced by the selection of Lylester Ranch in the 2019 Genomic Gems Sale, Rita 8909 sired by the proven low-birth and Marb., sire, Fireball.

• Rita 786 records a weaning ratio of 114. The first calf heifer dam of Lot 7 is a direct daughter of the \$180,000 valued Rita 27R Y05C sired by the ST Genetics roster member, Legend 5019. Full sisters to the dam of Lot 7 include: a \$20,000 heifer pregnancy selected by G Bar C Cattle Company; Rita 8918, the selection of Express Ranches in the 2019 Genomic Gems Sale; and Rita 8921 selling in that same offering to PWR Angus.

• Maternal sisters to the dam of this prospect include: Rita 5357, the \$150,000 valued proven and productive headliner of the 44 Farms and Hardwood Angus programs; Rita 9218, the \$25,000 top-selling open heifer of the 2019 Genomic Gems Sale selected by Wall Street Cattle Company; Rita 8979, the \$22,500 third high-selling open heifer of that same offering selected by De-Su Angus; and Rita 8956 selling in that same event to Four Sons Farm.

Lylester Ranch Sale hosted by





Lylester Ever Entense 793 / Lot 8

8 Lylester Ever Entense 793

Birth Date: 10-23-2020

Cow +*19942901

Tattoo: 793

#*Basin Payweight 1682

#*Basin Payweight 006S

*Poss Maverick
18962396

Poss Pride 5163

21AR O Lass 7017

+*Poss Hoover Dam 2509
+Poss Pride 9526

#*VAR Discovery 2240

#*AAR Ten X 7008 SA

+*DCF Ever Entense 5740

+*Deer Valley Rita 0308

18257373

*VAR Ever Entense 9082

#*Stevenson CE Deluxe 1914

+VAR Ever Entense 7024

CED	BW	WW	YW	RADG	DMI	YH	SC	DOC	PAP						
+4	+2.1	+77	+141	+31	+1.58	+4	+1.32	+23	+2.36						
CLAW	ANGLE	HP	CEM	MILK	MW	MH	CW	MARB	RE	FAT					
+63	+44	+14.1	+7	+29	+103	+6	+65	+1.13	+84	-.008					
\$M	+58	\$W	+79	\$F	+114	\$G	+76	\$B	+190	\$C	+304	\$AxH	+202	\$AxJ	+190

CED	BW	WW	YW	DMI	YH	SC	DOC	HP	CEM	MILK	MW	MH	CW	MB	REA	FAT	TEND
79	72	27	11	79	85	21	21	17	43	49	16	52	16	6	24	17	12

NON-PARENT FEMALES

Top 2% \$B	Top 5% \$F	Top 10% Marb	Top 20% REA	Top 25% HPreg
Top 3% \$C	Top 5% YW	Top 10% RADG	Top 20% SC	Top 25% Milk
Top 3% \$G	Top 10% \$AxJ	Top 10% WW	Top 25% Doc	
Top 4% \$AxH	Top 10% \$W	Top 15% CWT	Top 25% Fat	

• Will sell with Angus Registered #18515996.

Ever Entense 793 is a balanced-trait prospect produced by the foundation Lylester Ever Entense, Ever Entense 5740 sired by the proven Marb. sire Maverick.

- The proven and productive dam of Lot 8 is a direct daughter of the longtime matriarch of the Double Creek Farms program, Ever Entense 9082 by the \$110,000 44 Farms and Vintage Angus female sire, Discovery. The dam of this exciting prospect records a BR 2@99, a WR 2@106 and a YR 1@108 while showing ultrasound ratios IMF 5@114 and REA 5@103.
- Maternal sisters to the dam of Lot 8 include: Ever Entense 3740, the \$200,000 valued half interest selection of 44 Farms and Innovative Genetics in the 2014 Big Event at Express Ranches; Ever Entense 3734, the \$100,000 valued former Deer Valley Farm and Rutherford Ranches donor; and Everentense 37341, the selection of Cox Ranch in the 2015 Deer Valley Farm Sale.
- Maternal sisters to Ever Entense 793 include: Ever Entense 515, the \$56,000 top-selling female of the 2020 Lylester Ranch LiveOnline Sale selected by Arellano Bravo Angus; Ever Entense 405, the \$9,000 selection of Arellano Bravo Angus; and Ever Entense 403 selling to Four Sons Farm for \$9,000 in that same offering.

Lylester Ranch Sale hosted by





Lylester Henrietta Pride 705 / Lot 9

9 Lylester Henrietta Pride 705

Birth Date: 09-01-2020

Cow *19874283

Tattoo: 705

+*GAR Reliant 18669357
 +*GAR Sure Fire
 +*GAR Destination N244
 #*Connealy In Sure 8524
 +Chair Rock 5050 GAR 8086
 #B/R Destination 727-928
 +*GAR Predestined 3279

+*PF Henrietta Pride 6599 18673317
 #*VAR Discovery 2240
 +*PF 5682 Henrietta Pride 0533
 #*AAR Ten X 7008 SA
 +*Deer Valley Rita 0308
 #+SAV Bismarck 5682
 +Sitz Henrietta Pride 643T

CED	BW	WW	YW	RADG	DMI	YH	SC	DOC	PAP						
+9	+7	+69	+130	+29	+1.47	+5	+1.43	+28	+1.30						
CLAW	ANGLE	HP	CEM	MILK	MW	MH	CW	MARB	RE	FAT					
+62	+55	+8.9	+11	+30	+69	+2	+56	+1.34	+92	-.028					
\$M	+57	\$W	+78	\$F	+103	\$G	+88	\$B	+190	\$C	+303	\$AXH	+192	\$AXJ	+162

CED	BW	WW	YW	DMI	YH	SC	DOC	HP	CEM	MILK	MW	MH	CW	MB	REA	FAT	TEND
50	53	32	6	86	41	13	11	56	55	22	33	64	15	2	8	7	30

NON-PARENT FEMALES

Top 1% \$G	Top 10% \$AxH	Top 15% \$AxJ	Top 15% YW	Top 25% CEM
Top 2% \$B	Top 10% \$W	Top 15% \$F	Top 20% Milk	Top 25% CWT
Top 2% Marb	Top 10% Doc	Top 15% REA	Top 20% RADG	
Top 4% \$C	Top 10% Fat	Top 15% SC	Top 20% WW	

Henrietta Pride 705 is a low-birth and Marb. daughter of the \$30,000 fourth high-selling open heifer of the 2017 Pollard Farms Sale selected by Lylester Ranch, Henrietta Pride 6599 sired by the ST Genetics roster member, Reliant.

- Henrietta Pride 705 posts a birth ratio of 93 and a weaning ratio of 112. The dam of Lot 9 is a direct daughter of the \$80,000 Beharrell Angus and Pollard Farms donor, Henrietta Pride 0533 sired by the foundation female sire, Discovery and records a WR 2@111.
- Henrietta 388, a maternal sister to Lot 9 was selected by Soaring Eagle Farms in the 2020 Lylester Ranch LiveOnline Sale.

Lylester Ranch Sale hosted by





Lylester Blackbird 872 / Lot 10

10 Lylester Blackbird 872

Birth Date: 01-13-2021

Cow +*19972105

Tattoo: 872

#*Basin Payweight 1682

#*Basin Payweight 006S

*Poss Maverick
18962396

Poss Pride 5163

21AR O Lass 7017
+*Poss Hoover Dam 2509
+Poss Pride 9526

+*EXAR Stud 4658B

#*AAR Ten X 7008 SA

+*ACC Blackbird 7041
18722050

+*Spruce Mtn Blackbird 3392

+*BoBo Rita 1559
#*Hoover Dam
+*Riverbend Blackbird T1088

CED	BW	WW	YW	RADG	DMI	YH	SC	DOC	PAP	
+9	+1	+78	+147	+37	+1.23	+5	+71	+19	+2.24	
CLAW	ANGLE	HP	CEM	MILK	MW	MH	CW	MARB	RE	FAT
+47	+37	+11.9	+12	+31	+95	+7	+71	+1.51	+90	+0.13
\$M	\$W	\$F	\$G	\$B	\$C	\$A	\$H	\$J	\$X	\$JxJ
+66	+86	+128	+92	+220	+351	+250	+239			

CED	BW	WW	YW	DMI	YH	SC	DOC	PAP	RE	FAT	TEND
29	23	10	3	83	40	48	33	52	27	7	13
4	2	2	2	2	2	2	2	2	2	2	2

CED	BW	WW	YW	DMI	YH	SC	DOC	HP	CEM	MILK	MW	MH	CW	MB	REA	FAT	TEND
29	23	10	3	83	40	48	33	52	27	27	7	13	4	2	9	46	1

NON-PARENT FEMALES

Top 1% \$AxH	Top 1% \$G	Top 3% YW	Top 15% CEM
Top 1% \$AxJ	Top 1% Marb	Top 4% \$W	Top 15% Milk
Top 1% \$B	Top 1% RADG	Top 5% CWT	Top 15% REA
Top 1% \$C	Top 2% \$F	Top 10% WW	Top 25% BW

Blackbird 872 is currently one of ONLY five non-parent females with her combination of BW, WW, YW, Marb., RE, \$B and \$C.

• Blackbird 872 is an outstanding low-birth, Marb. and \$C daughter of the foundation Lylester Ranch Blackbird, Blackbird 7041 selected as the \$18,000 top-selling bred heifer of the 2018 Angus of Clear Creek Sale, sired by the Semex roster leader, Maverick.

• The dam of Lot 10 records a BR 1@95 and a WR 1@106. The dam of Lot 10 blends the low-birth and Marb. sire in the Express Ranches, Sydenstricker Genetics and Basin Angus programs, Stud 4658B with a direct daughter of the \$50,000 Express Ranches and Rimrock Productions donor, Blackbird T1088 by Hoover Dam.

• Blackbird 353, a maternal sister to Lot 10 was selected by Arellano Bravo Angus in the 2020 Lylester Ranch LiveOnline Sale.

Lylester Ranch Sale hosted by





Lylester Early Bird 918 / Lot 11

11 Lylester Early Bird 918

Birth Date: 03-24-2021

Cow +*20039733

Tattoo: 918

*TCA Eastwood
19531687

*Jindra Acclaim

*TCA Marquis Treasure 711

*Jindra 3rd Dimension
+*Jindra Blackbird Lassie 1111
+*Pine View Marquis P154
*TCA Accrue Treasure 511+*GAR Early Bird N955
18446110

*GAR Early Bird

+*GAR Prediction 762

+*GAR Daylight
+*GAR Progress 830
+GAR Prediction
+*GAR 28 Ambush 1069

GAR Early Bird N955 / The dam of Lot 11.

CED	BW	WW	YW	RADG	DMI	YH	SC	DOC	PAP								
+2	+1.1	+81	+143	+30	+1.46	+7	+0.04	+27	-.59								
CLAW	ANGLE	HP	CEM	MILK	MW	MH	CW	MARB	RE	FAT							
+62	+33	+17.3	+6	+19	+96	+8	+65	+1.52	+88	-.032							
\$M	+75	\$W	+76	\$F	+115	\$G	+96	\$B	+211	\$C	+349	\$AxH	+204	\$AxJ	+175		
CED	BW	WW	YW	DMI	YH	SC	DOC	HP	CEM	MILK	MW	MH	CW	MB	REA	FAT	TEND
72	25	17	18	79	55	95	20	5	85	90	21	31	13	2	18	8	91

NON-PARENT FEMALES

Top 1% \$B	Top 3% \$AxH	Top 10% \$AxJ	Top 15% \$W	Top 15% PAP
Top 1% \$C	Top 4% WW	Top 10% Doc	Top 15% CWT	Top 20% \$M
Top 1% \$G	Top 4% YW	Top 10% Fat	Top 15% RADG	
Top 1% Marb	Top 5% \$F	Top 10% HPreg	Top 15% REA	

- Early Bird 918 is a direct daughter of the \$25,000 selection of Lylester Ranch in the 2018 Gardiner Angus Sale, Early Bird N955 sired by the proven \$C leader, Eastwood.
- The dam of Lot 11 records an ultrasound IMF ratio 2@139. The dam of Lot 11 combines proven calving-ease of Early Bird and the female sire, Prediction with the featured Hirschy Angus donor, Ambush 1068, the daughter of the \$360,000 valued now-deceased Crazy K Ranch donor, Objective 1885. Maternal siblings to the grandam of Lot 11 include: the Gardiner Angus sire, Advantage; and the foundation Percy Angus donor, Predestined 1421.



Lylester Rita 869 / Lot 12

12 Lylester Rita 869

Birth Date: 01-11-2021

Cow *19962789

Tattoo: 869

+*Hoover No Doubt
*Hoover Know How
18543644 #Blkcp Empress Ellston L265

#*Mogck Bullseye
*Miss Blackcap Ellston J2
+SydGen Storm 8504
Blkcp Empress Ellston J120

#*AAR Ten X 7008 SA
*Spruce Mtn Rita 5011
18068367 +*BJ 5050 New Design 1272

#*Mytty In Focus
#AAR Lady Kelton 5551
#+GAR New Design 5050
+*BJ Objective 8215

CED	BW	WW	YW	RADG	DMI	YH	SC	DOC	PAP								
+6	+2.2	+69	+135	+32	+1.59	+7	+1.79	+22	+1.73								
CLAW	ANGLE	HP	CEM	MILK	MW	MH	CW	MARB	RE	FAT							
+35	+34	+12.1	+10	+25	+94	+9	+62	+1.39	+96	-.010							
\$M	+64	\$W	+64	\$F	+114	\$G	+89	\$B	+204	\$C	+329	\$AxH	+200	\$AxJ	+184		
CED	BW	WW	YW	DMI	YH	SC	DOC	HP	CEM	MILK	MW	MH	CW	MB	REA	FAT	TEND
73	81	14	2	97	14	8	19	54	33	64	6	5	3	3	4	16	44

NON-PARENT FEMALES

Top 1% \$B	Top 2% Marb	Top 5% RADG	Top 10% REA	Top 20% WW
Top 1% \$C	Top 4% \$AxH	Top 5% SC	Top 10% YW	Top 25% Fat
Top 1% \$G	Top 5% \$F	Top 10% \$AxJ	Top 15% CWT	

- Rita 869 is a balanced-trait female produced by a proven and productive dam who combines the female sires, Ten X and New Design 5050 and is sired by the featured Teixeira Cattle Company and Select Sires headliner, Know How.
- The dam of Lot 12 records a WR 2@111 and a YR 2@104 while showing ultrasound ratios IMF 2@106 and REA 2@102.

Lylester Ranch Sale hosted by



LE

Blackcap 913

LE



Cam



Blackcap 913 is a sensational low-birth, carcass and \$B and \$C prospect produced by the foundation Blackcap in the Lylester Ranch program, Blackcap 6016 and sired by the record-selling multi-trait feature, Home Town.

13 Lylester Blackcap 913

Birth Date: 03-21-2021

Cow +*20039831

Tattoo: 913

+*GAR Home Town
19266718

+*GAR Ashland

+*Chair Rock Sure Fire 6095

+*GAR Early Bird

+*Chair Rock Ambush 1018

+*GAR Sure Fire

+*Chair Rock Progress 3005

#*VAR Generation 2100

+*Vintage Blackcap 6016

18376053

+*VAR Blackcap 9319

#*Connealy Consensus 7229

+*Sandpoint Blackbird 8809

#*Connealy All Around

+*EXAR New Design 4212

CED	BW	WW	YW	RADG	DMI	YH	SC	DOC	PAP						
+12	+4	+77	+136	+28	+1.33	+5	+1.62	+25	+1.56						
CLAW	ANGLE	HP	CEM	MILK	MW	MH	CW	MARB	RE	FAT					
+79	+53	+9.8	+16	+20	+80	+5	+54	+1.60	+1.10	-.017					
\$M	+55	\$W	+76	\$F	+102	\$G	+101	\$B	+203	\$C	+318	\$AXH	+230	\$AXJ	+215

CED	BW	WW	YW	DMI	YH	SC	DOC	HP	CEM	MILK	MW	MH	CW	MB	REA	FAT	TEND
3	10	33	25	66	84	16	21	57	2	86	46	73	45	1	4	12	64

NON-PARENT FEMALES

Top 1% \$AXH	Top 1% Marb	Top 10% CED	Top 15% \$F	Top 25% RADG
Top 1% \$B	Top 2% \$AXJ	Top 10% SC	Top 15% \$W	
Top 1% \$G	Top 2% \$C	Top 10% WW	Top 20% Doc	
Top 1% CEM	Top 3% REA	Top 10% YW	Top 20% Fat	

- Blackcap 913 is one of ONLY three non-parent females in the breed with her combination of CED, BW, WW, YW, Marb., RE, \$F, \$G, \$B and \$C.
- The dam of Lot 13 blends the \$250,000 Generation with the prolific Vintage Angus and Schnoor Sisters donor, Blackcap 9319. The dam of Lot 13 posts a BR 1@94 and a WR 1@99 while carrying ultrasound ratios IMF 1@100 and REA 1@100. Blackcap 2, a full sister to the dam of Lot 13 and longtime Lylester Ranch donor was selected by Jac's Ranch in the 2020 Lylester Ranch LiveOnline Sale.
- Maternal siblings to the dam of Lot 13 include: Blackcap 5142, the \$220,000 valued and top-selling female of the 2019 Edisto Pines Sale selected by Spruce Mountain Ranch; Blackcap 5419, the \$120,000 selection of Rooney Angus Ranch; Blackcap 5417, the \$120,000 half interest selection of Spruce Mountain Ranch as the top-selling fall

- pair; Blackcap 8583, the \$110,000 second high-selling open heifer of the 2019 Vintage Angus Sale selected by Edisto Pines Farm; Blackcap 8263, the \$100,000 half interest selection of Deer Valley Farm; Blackcap 3185, the \$100,000 second high-selling open heifer selected by Express Ranches and Pollard Farms; Best Buy 8577, the \$90,000 top-selling bull of the 2019 Vintage Angus Bull Sale selected by Edisto Pines Farm; Blackcap 2066, the \$90,000 valued half interest selection as the top valued bred heifer by Crazy K Ranch; Blackcap 4026, the \$85,000 second high-selling open heifer selling to EZ Angus Ranch; and Blackcap 6018, the \$60,000 top-selling bred cow of the 2019 Vintage Angus Sale selling to 4 Sons Farm.
- Blackcap 382, a maternal sister to Lot 13 was the \$8,500 featured bred heifer of the 2020 Lylester Ranch LiveOnline Sale selected by Riverbend Ranch.



Lylester Blackcap 889 / Lot 14

14 Lylester Blackcap 889

Birth Date: 01-17-2021

Cow **+*19972142** Tattoo: 889

*GAR Momentum

#+*GAR Progress

+*EWA Ascend 7306

+GAR Big Eye 1770

19054050

+*EWA 3128 of 9067 Weigh Up

#*Plattmire Weigh Up K360

+*Rita 9067 of Rita 5M13 Obj

+*PA Power Tool B1456

#+*PA Power Tool 9108

*Lylester Janna Blackcap 103

*PA Lora 419-707

18456562

Spruce Mtn Blackcap 3072

*SMR 585B Outcross 0507

+Spruce Mtn Blackcap 1317

CED	BW	WW	YW	RADG	DMI	YH	SC	DOC	PAP								
+9	+2.2	+85	+145	+29	+1.65	+6	+82	+17	+3.93								
CLAW	ANGLE	HP	CEM	MILK	MW	MH	CW	MARB	RE	FAT							
+41	+38	+7.8	+8	+27	+80	+4	+70	+94	+1.07	-.051							
\$M	+70	\$W	+90	\$F	+116	\$G	+74	\$B	+190	\$C	+316	\$AxH	+207	\$AxJ	+209		
CED	BW	WW	YW	DMI	YH	SC	DOC	HP	CEM	MILK	MW	MH	CW	MB	REA	FAT	TEND
65	82	6	14	87	46	46	54	82	80	71	29	51	9	27	9	5	95

NON-PARENT FEMALES

Top 2% \$B
Top 2% \$C
Top 2% \$WTop 2% Fat
Top 2% WW
Top 3% \$AxHTop 3% \$AxJ
Top 4% \$G
Top 4% REATop 4% YW
Top 5% \$F
Top 10% CWTTop 20% Marb
Top 20% RADG

• Blackcap 889 is a balanced-trait growth daughter produced by a fabulous outcross dam who blends the female sire, Power Tool and the former Spruce Mountain Ranch feature, Outcross 0507 sired by the \$B and \$C sire bred in the Edgewood Angus program, Ascend 7306.

Lylester Ranch Sale hosted by





Lylester Chloe 911 / Lot 15

15 Lylester Chloe 911

Birth Date: 02-19-2021

Cow *19983163

Tattoo: 911

+*Poss Rawhide
19416968

*Poss Maverick

+*Poss Blueblood 6502

*MK Chloe 706
18959376

*Jindra Acclaim

#MK Chloe 511

#+*Basin Payweight 1682

Poss Pride 5163

Poss Easy Impact 0119

Poss Blueblood 920

*Jindra 3rd Dimension

+Jindra Blackbird Lassy 1111

#*Connealy Capitalist 028

MK Chloe 312

CED	BW	WW	YW	RADG	DMI	YH	SC	DOC	PAP								
+7	+1.4	+73	+130	+29	+92	+4	+97	+27	-2.16								
CLAW	ANGLE	HP	CEM	MILK	MW	MH	CW	MARB	RE	FAT							
+44	+36	+12.4	+14	+22	+87	+5	+66	+85	+61	+0.051							
\$M	+71	\$W	+71	\$F	+121	\$G	+56	\$B	+177	\$C	+301	\$AxH	+181	\$AxJ	+167		
CED	BW	WW	YW	DMI	YH	SC	DOC	HP	CEM	MILK	MW	MH	CW	MR	REA	FAT	TEND
59 <td>58<td>24<td>29<td>47<td>61<td>32<td>9<td>45<td>13<td>78<td>34<td>53<td>18<td>32<td>56<td>92<td>6</td></td></td></td></td></td></td></td></td></td></td></td></td></td></td></td></td>	58 <td>24<td>29<td>47<td>61<td>32<td>9<td>45<td>13<td>78<td>34<td>53<td>18<td>32<td>56<td>92<td>6</td></td></td></td></td></td></td></td></td></td></td></td></td></td></td></td>	24 <td>29<td>47<td>61<td>32<td>9<td>45<td>13<td>78<td>34<td>53<td>18<td>32<td>56<td>92<td>6</td></td></td></td></td></td></td></td></td></td></td></td></td></td></td>	29 <td>47<td>61<td>32<td>9<td>45<td>13<td>78<td>34<td>53<td>18<td>32<td>56<td>92<td>6</td></td></td></td></td></td></td></td></td></td></td></td></td></td>	47 <td>61<td>32<td>9<td>45<td>13<td>78<td>34<td>53<td>18<td>32<td>56<td>92<td>6</td></td></td></td></td></td></td></td></td></td></td></td></td>	61 <td>32<td>9<td>45<td>13<td>78<td>34<td>53<td>18<td>32<td>56<td>92<td>6</td></td></td></td></td></td></td></td></td></td></td></td>	32 <td>9<td>45<td>13<td>78<td>34<td>53<td>18<td>32<td>56<td>92<td>6</td></td></td></td></td></td></td></td></td></td></td>	9 <td>45<td>13<td>78<td>34<td>53<td>18<td>32<td>56<td>92<td>6</td></td></td></td></td></td></td></td></td></td>	45 <td>13<td>78<td>34<td>53<td>18<td>32<td>56<td>92<td>6</td></td></td></td></td></td></td></td></td>	13 <td>78<td>34<td>53<td>18<td>32<td>56<td>92<td>6</td></td></td></td></td></td></td></td>	78 <td>34<td>53<td>18<td>32<td>56<td>92<td>6</td></td></td></td></td></td></td>	34 <td>53<td>18<td>32<td>56<td>92<td>6</td></td></td></td></td></td>	53 <td>18<td>32<td>56<td>92<td>6</td></td></td></td></td>	18 <td>32<td>56<td>92<td>6</td></td></td></td>	32 <td>56<td>92<td>6</td></td></td>	56 <td>92<td>6</td></td>	92 <td>6</td>	6

NON-PARENT FEMALES

Top 1% PAP

Top 3% \$F

Top 4% \$C

Top 4% CEM

Top 10% \$AxH

Top 10% \$B

Top 10% CWT

Top 10% Doc

Top 15% \$AxJ

Top 15% WW

Top 15% YW

Top 20% \$W

Top 20% RADG

Top 25% \$G

Top 25% \$M

Top 25% Marb

- Chloe 911 is another balanced-trait highlight from the heart of the spring heifer calves in the Lylester Ranch program and she combines a powerful and proven dam who blends Acclaim and Capitalist and is sired by the \$140,000 ST Genetics roster member, Rawhide.

- The dam of Lot 15 records a WR 1@115.

Lylester Ranch Sale hosted by





Lylester Blackcap Empress 788 / Lot 16

16 Lylester Blackcap Empress 788

Birth Date: 10-21-2020

Cow +*19946688

Tattoo: 788

*Linz Exemplify 71124
19265123

*Connealy Confidence Plus
*MAR Erica 1617

#*Connealy Confidence 0100
Elbanna of Conanga 1209
#*RB Tour Of Duty 177
+*MAR Erica Rito 1402

+*Rito 12E7 of 5F56 Rito 5M2
*44 Blackcap Empress 4472
17918172

+*44 Blackcap Empress 2144

#*Rito Revenue 5M2 of 2536 Pre
+*Rita 5F56 of 1198 FD
#*B/R New Day 454
+*44 Blackcap Empress 9197

CED	BW	WW	YW	RADG	DMI	YH	SC	DOC	PAP								
+9	-6	+61	+115	+28	+92	+2	+71	+27	+146								
CLAW	ANGLE	HP	CEM	MILK	MW	MH	CW	MARB	RE	FAT							
+60	+53	+16.8	+9	+22	+42	+1	+58	+1.09	+81	+026							
\$M	+80	\$W	+64	\$F	+114	\$G	+71	\$B	+185	\$C	+320	\$AxH	+193	\$AxJ	+168		
CED	BW	WW	YW	DMI	YH	SC	DOC	HP	CEM	MILK	MW	MH	CW	MB	REA	FAT	TEND
38	19	39	20	51	63	45	24	13	54	68	55	54	13	10	11	60	9

NON-PARENT FEMALES

Top 2% \$C	Top 10% \$AxH	Top 10% Doc	Top 15% \$AxJ	Top 25% CWT
Top 3% \$B	Top 10% \$G	Top 10% HPreg	Top 15% BW	Top 25% RADG
Top 5% \$F	Top 10% \$M	Top 10% Marb	Top 20% REA	

- Blackcap Empress 788 is a calving-ease prospect produced by the cornerstone member of the herd sire producing Blackcap Empress family in the Lylester Ranch program, Blackcap Empress 4472 sired by the \$150,000 headliner of the Linz Heritage program, Exemplify 71124.
- The dam of Lot 16 blends the Genex roster member, Rito 12E7 and New Day 454 with a daughter of the featured Marb. sire in the 44 Farms herd sire roster, Ambush 28. The dam of Lot 16 posts a BR 2@86 and a WR 2@101 while carrying an ultrasound REA ratio 2@107. A maternal sister sells as Lot 17.

Lylester Ranch Sale hosted by





Lylester Blackcap 620 / Lot 17

17 Lylester Blackcap 620

Birth Date: 08-08-2019

Cow +*19590816

Tattoo: 620

#*Connealy Black Granite
*Bar R Jet Black 5063
18389838 Bar R Iris Anita 0113

#*Connealy Consensus 7229
#Eura Elga of Conanga 9109
#Sitz Upward 307R
Bar R Anita 7081

+*Rito 12E7 of 5F56 Rito 5M2
*44 Blackcap Empress 4472
17918172 +*44 Blackcap Empress 2144

#*Rito Revenue 5M2 of 2536 Pre
+*Rita 5F56 of 1198 FD
#*B/R New Day 454
+*44 Blackcap Empress 9197

CED	BW	WW	YW	RADG	DMI	YH	SC	DOC	PAP								
+7	+2.1	+76	+125	+26	+86	+2	+94	+23	+2.10								
CLAW	ANGLE	HP	CEM	MILK	MW	MH	CW	MARB	RE	FAT							
+58	+50	+14.4	+6	+23	+78	+4	+70	+1.01	+1.04	+0.20							
\$M	+69	\$W	+77	\$F	+118	\$G	+71	\$B	+189	\$C	+314	\$AxH	+209	\$AxJ	+196		
CED	BW	WW	YW	DMI	YH	SC	DOC	HP	CEM	MILK	MW	MH	CW	MB	REA	FAT	TEND
54	74	11	24	58	74	38	20	37	77	72	21	34	5	11	5	52	25

PROVEN FEMALES

Top 2% SC	Top 4% \$F	Top 10% \$G	Top 15% \$W	Top 25% Doc
Top 3% \$AxH	Top 5% \$AxJ	Top 10% CWT	Top 15% Marb	Top 25% HPreg
Top 3% \$B	Top 5% REA	Top 10% WW	Top 20% YW	

17A Lylester Rawhide 998

Birth Date: 08-05-2021

Bull 20105635

Tattoo: 998

+*Poss Rawhide
19416968 +*Poss Blueblood 6502

*Poss Maverick

+*Basin Payweight 1682
Poss Pride 5163
Poss Easy Impact 0119
Poss Blueblood 920

+*Bar R Jet Black 5063
+*Lylester Blackcap 620
19590816 +*44 Blackcap Empress 4472

#*Connealy Black Granite
Bar R Iris Anita 0113
+*Rito 12E7 of 5F56 Rito 5M2
+*44 Blackcap Empress 2144

CED	BW	WW	YW	RADG	DMI	YH	SC	DOC	PAP								
I+9	I+9	I+76	I+128	I+29	I+78	I+2	I+97	I+24	I+10								
CLAW	ANGLE	HP	CEM	MILK	MW	MH	CW	MARB	RE	FAT							
I+55	I+46	I+15.1	I+8	I+25	I+79	I+4	I+68	I+1.06	I+92	I+0.34							
\$M	+75	\$W	+82	\$F	+121	\$G	+71	\$B	+191	\$C	+323	\$AxH	+218	\$AxJ	+202		
CED	BW	WW	YW	DMI	YH	SC	DOC	HP	CEM	MILK	MW	MH	CW	MB	REA	FAT	TEND
N/A	N/A	N/A	N/A	N/A	N/A	N/A	N/A	N/A	N/A	N/A	N/A	N/A	N/A	N/A	N/A	N/A	N/A

NON-PARENT MALES

Top 1% SC	Top 4% \$AxJ	Top 10% Marb	Top 15% YW
Top 2% \$AxH	Top 10% \$G	Top 10% REA	Top 20% \$M
Top 2% \$B	Top 10% \$W	Top 10% WW	Top 20% Doc
Top 3% \$F	Top 10% CWT	Top 15% RADG	Top 20% HPreg

- Blackcap 620 is an outstanding first calf heifer produced by the cornerstone member of the herd sire producing Blackcap Empress family in the Lylester Ranch program, Blackcap Empress 4472 sired by phenotype sire, Jet Black 5063.
- The dam of Lot 17 blends the Genex roster member, Rito

- 12E7 and New Day 454 with a daughter of the featured Marb. sire in the 44 Farms herd sire roster, Ambush 28. The dam of Lot 16 posts a BR 2@86 and a WR 2@101 while carrying an ultrasound REA ratio 2@107. A maternal sister sells as Lot 16.
- Has a 8/5/21 bull calf, Lot 17A, by Poss Rawhide.

Lylester Ranch Sale hosted by





Lylester Ruby 635 / Lot 18

18 Lylester Ruby 635

Birth Date: 08-15-2019

Cow *19579773

Tattoo: 635

*Lylester Pit Boss 145
19063867

#*VAR Discovery 2240
+*VAR Blackcap 9319

+*Vintage Legacy 4409
*Vintage Ruby 6475
18708648

+*VAR Ruby 1286

#*AAR Ten X 7008 SA
+*Deer Valley Rita 0308
#*Connealy All Around
+*EXAR New Design 4212

#*VAR Generation 2100
+*Riverbend Blackcap W944
#*Summitcrest Complete 1P55
B/R Ruby 9114

CED	BW	WW	YW	RADG	DMI	YH	SC	DOC	PAP								
+8	+1.1	+81	+135	+26	+1.31	+4	+18	+23	+1.10								
CLAW	ANGLE	HP	CEM	MILK	MW	MH	CW	MARB	RE	FAT							
+68	+61	+12.2	+13	+28	+72	+3	+69	+86	+80	-.022							
\$M	+69	\$W	+92	\$F	+114	\$G	+65	\$B	+179	\$C	+301	\$AxH	+181	\$AxJ	+154		
CED	BW	WW	YW	DMI	YH	SC	DOC	HP	CEM	MILK	MW	MH	CW	MB	REA	FAT	TEND
56	52	5	24	83	60	76	28	34	16	32	27	47	5	19	19	21	99

PROVEN FEMALES

Top 2% \$W	Top 5% \$B	Top 10% \$G	Top 10% YW	Top 25% Doc
Top 4% \$C	Top 5% \$F	Top 10% CEM	Top 15% \$AxJ	Top 25% Marb
Top 4% WW	Top 10% \$AxH	Top 10% CWT	Top 15% Fat	Top 25% REA

18A Lylester Ruby 999

Birth Date: 08-10-2021

Cow 20108124

Tattoo: 999

+*GAR Greater Good
19362382

+*GAR Ashland
+*GAR Sure Fire A5008

+*Lylester Pit Boss 145
*Lylester Ruby 635
19579773

+*Vintage Ruby 6475

*GAR Early Bird
+*Chair Rock Ambush 1018
+*GAR Sure Fire
+*GAR Mandate A2011

#*VAR Discovery 2240
+*VAR Blackcap 9319
+*Vintage Legacy 4409
+*VAR Ruby 1286

CED	BW	WW	YW	RADG	DMI	YH	SC	DOC	PAP								
I+9	I+1.5	I+88	I+151	I+30	I+1.62	I+8	I+55	I+22	I+1.68								
CLAW	ANGLE	HP	CEM	MILK	MW	MH	CW	MARB	RE	FAT							
I+69	I+56	I+10.7	I+9	I+28	I+93	I+6	I+71	I+1.20	I+99	I-.025							
\$M	+61	\$W	+95	\$F	+114	\$G	+82	\$B	+197	\$C	+317	\$AxH	+200	\$AxJ	+181		
CED	BW	WW	YW	DMI	YH	SC	DOC	HP	CEM	MILK	MW	MH	CW	MB	REA	FAT	TEND
N/A	N/A	N/A	N/A	N/A	N/A	N/A	N/A	N/A	N/A	N/A	N/A	N/A	N/A	N/A	N/A	N/A	N/A

NON-PARENT FEMALES

Top 1% \$B	Top 2% \$G	Top 4% \$AxH	Top 5% CWT	Top 10% REA
Top 1% \$W	Top 2% WW	Top 4% Marb	Top 10% \$AxJ	Top 15% RADG
Top 2% \$C	Top 2% YW	Top 5% \$F	Top 10% Fat	

• Ruby 635 is an exciting balanced-trait first calf heifer produced by a proven dam who combines Legacy 4409 and Complete with the \$210,000 valued former 44 Farms and Vintage Angus Ranch donor, Ruby 9114 sired by the Lylester Ranch herd sire, Pit Boss 145.

• The first calf heifer dam of Lot 18 records a BR 1@96 and a WR 1@101.
• Has a 8/10/21 heifer calf, Lot 18A, by GAR Greater Good.

Lylester Ranch Sale hosted by





Lylester Rita 728 / Lot 19

19 Lylester Rita 728

Birth Date: 01-14-2020

Cow *19701394

Tattoo: 728

+*KCF Bennett Consent Y75
 +*KCF Bennett Summation
 19125179

*Thomas Patricia 9705

+*FF Rito Righteous 6R41
 +*G-C Rita of N857 8D31
 19086402

DAR Rita N857

#*Connealy Consensus
 +KCF Miss Protege W148
 #*SS Objective T510 0T26
 +Thomas Patricia 71138

#+*Quaker Hill Rampage 0A36
 +*FF Rita 3R30 of 9Q23 5M2
 #*Hoover Dam
 +Hedgewood Rita 030

CED	BW	WW	YW	RADG	DMI	YH	SC	DOC	PAP								
+14	-1.2	+73	+131	+27	+1.37	-1	+19	+16	+1.37								
CLAW	ANGLE	HP	CEM	MILK	MW	MH	CW	MARB	RE	FAT							
+52	+52	+11.1	+8	+34	+53	+1	+57	+1.18	+87	+0.21							
\$M	+71	\$W	+92	\$F	+97	\$G	+76	\$B	+174	\$C	+297	\$AxH	+206	\$AxJ	+182		
CED	BW	WW	YW	DMI	YH	SC	DOC	HP	CEM	MILK	MW	MH	CW	MB	REA	FAT	TEND
7	10	22	16	79	98	78	58	56	95	12	65	82	27	5	18	55	81

NON-PARENT FEMALES

Top 2% \$W	Top 5% \$C	Top 10% \$B	Top 15% WW
Top 3% \$AxH	Top 5% Marb	Top 10% BW	Top 25% \$F
Top 3% \$G	Top 5% Milk	Top 10% YW	Top 25% \$M
Top 3% CED	Top 10% \$AxJ	Top 15% REA	Top 25% CWT

- Rita 728 is a powerful calving-ease and Marb. female from the heart of the Lylester Ranch bred heifers and was produced by a first calf heifer who blends Rito Righteous and Hoover Dam sired by the Knoll Crest Farms, Quaker Hill Farm and Katie Colin sire, Summation.
- Rita 728 records a birth ratio of 91 and a weaning ratio of 104.
- Due 1/6/22 to Poss Rawhide.

Lylester Ranch Sale hosted by





Lylester Blackbird 921 / Lot 20

20 Lylester Blackbird 921

Birth Date: 03-24-2021

Cow +*20039824

Tattoo: 921

*GAR Home Town
19266718

+*GAR Ashland

+*Chair Rock Sure Fire 6095

#*VAR Discovery 2240
+* EXAR Blackbird 6726
18413996

+*Vintage Blackbird 4202

*GAR Early Bird
+*Chair Rock Ambush 1018
+*GAR Sure Fire
+*Chair Rock Progress 3005

#*AAR Ten X 7008 SA
+*Deer Valley Rita 0308
#*Connealy Consensus 7229
+*Sandpoint Blackbird 8809

CED	BW	WW	YW	RADG	DMI	YH	SC	DOC	PAP	
+7	+8	+80	+154	+34	+1.88	+9	+1.77	+23	+1.91	
CLAW	ANGLE	HP	CEM	MILK	MW	MH	CW	MARB	RE	FAT
+59	+45	+12.0	+7	+30	+108	+1.0	+71	+1.47	+92	+0.04
\$M	\$W	\$F	\$G	\$B	\$C	\$A	\$H	\$A	\$J	\$T
+55	+84	+124	+91	+215	+334	+213	+205			

CED	BW	WW	YW	DMI	YH	SC	DOC	HP	CEM	MILK	MW	MH	CW	MB	RE	FAT	TEND
24	26	29	3	91	53	7	20	51	51	31	20	22	12	2	25	52	92

CED	BW	WW	YW	DMI	YH	SC	DOC	HP	CEM	MILK	MW	MH	CW	MB	REA	FAT	TEND
24	26	29	3	91	53	7	20	51	51	31	20	22	12	2	25	52	92

NON-PARENT FEMALES

Top 1% \$B	Top 2% \$AxH	Top 4% \$AxJ	Top 10% SC
Top 1% \$C	Top 2% \$F	Top 5% \$W	Top 15% REA
Top 1% \$G	Top 2% RADG	Top 5% CWT	Top 20% Milk
Top 1% Marb	Top 2% YW	Top 5% WW	Top 25% Doc

• Blackbird 921 is a multi-trait headliner of the Blackbird family and was produced by the \$200,000 valued Lylester Ranch donor, Blackbird 6726 and is sired by the record-selling Home Town.

Featuring a daughter of the \$200,000 valued Lylester Ranch and Vintage Angus Ranch donor, Blackbird 6726 sired by the record-selling sire, Home Town.

- Blackbird 6726, the dam of Lot 20 is a direct daughter of the \$80,000 headliner of the Riverbend Ranch donor program, Blackbird 4202 sired by the \$110,000 proven female sire in the 44 Farms and Vintage Angus herd sire rosters, Discovery.
- The dam of Lot 20 records a WR 2@109 and a YR 2@107 while showing ultrasound ratios IMF 1@108 and REA 1@103. Maternal sisters to the dam of Lot 20 include: Blackbird 8677, the \$100,000 top-selling female of the 2019 Pollard Farms Sale selected by Ankony Angus; Blackbird 7064, the \$75,000 top-selling bred heifer of the 2018 Pollard Sale selected by Ankony Angus; Blackbird 6132, the \$35,000 second high-selling bred heifer of the 2017 Pollard Sale selling to Sandringham Farm; Blackbird 9576, the \$18,000 selection of Aberan Angus of Edgehill and Executive Ranches in the 2020 Pollard Farms Sale; Blackbird 7567, the \$15,000 fourth high-selling fall pair of the 2019 Pollard Sale selected by Belle Point Ranch; a heifer pregnancy selected in the 2020 Bases Loaded Sale by Spruce Mountain Ranch for \$13,000; and Blackbird 9725 selling in the 2019 Big Event Sale to Wilks Ranch.

Lylester Ranch Sale hosted by





Lylester Full Monty 570 / Lot 21

21 Lylester Full Monty 570

Birth Date: 06-04-2020

Bull +*19755891

Tattoo: 570

#+*Basin Payweight 1682
 *Poss Maverick
 18962396


Poss Pride 5163

#+*Basin Payweight 006S
 21AR O Lass 7017
 +*Poss Hoover Dam 2509
 +Poss Pride 9526

#*VAR Discovery 2240
 +*Vintage Blackbird 7184
 18745204

+*Sandpoint Blackbird 8809

#*AAR Ten X 7008 SA
 +*Deer Valley Rita 0308
 #*Connealy Onward
 +Riverbend Blackbird 4301

CED	BW	WW	YW	RADG	DMI	YH	SC	DOC	PAP									
+6	+2.4	+79	+150	+36	+1.29	+1.0	+2.07	+17	+1.13									
CLAW	ANGLE	HP	GEM	MILK	MW	MH	CW	MARB	RE	FAT								
+64	+49	+14.9	+9	+32	+99	+9	+66	+1.60	+7.0	-.008								
\$M	+61	\$W	+82	\$F	+117	\$G	+95	\$B	+212	\$C	+336	\$AxH	+188	\$AxJ	+169			
	87	94	5	1	86	6	2	62	6	39	26	3	10	4	1	38	29	11

NON-PARENT MALES															
Top 1% \$B	Top 1% RADG	Top 10% \$AxH	Top 15% \$AxJ												
Top 1% \$C	Top 2% SC	Top 10% \$W	Top 15% Milk												
Top 1% \$G	Top 3% YW	Top 10% CWT	Top 20% HPreg												
Top 1% Marb	Top 4% \$F	Top 10% WW	Top 25% Fat												



Vintage Blackbird 7184 / A son sells as Lot 21.

- BW 82 lbs; Adj WW 840 lbs.
- Full Monty 570 is a Marb. prospect produced by the \$215,000 selection of Lylester as the Foundation Heifer at the 2018 National Western, Blackbird 7184 sired by the popular Maverick.
- Blackbird 559, a full sister to Lot 21 was the \$20,000 lead-off female of the 2020 Lylester Ranch LiveOnline Sale selected by Vintage Angus Ranch. Maternal sisters to Lot 22 include the lead-off females of this offering selling as Lots 1A through 1C.



Lylester Duke 653 / Lot 22

22 Lylester Duke 653

Birth Date: 08-09-2020

Bull +*19886989

Tattoo: 653

#*Connealy Confidence 0100
 *Connealy Confidence Plus
 17585576 Elbanna of Conanga 1209

Connealy Tobin
 Becka Gala of Conanga 8281
 #*Connealy Consensus
 Elbasta of Conanga 9703

#*VAR Discovery 2240
 +*Blackstone Discovery 6428
 18760990 +GAR Big Eye 1770

#*AAR Ten X 7008 SA
 +*Deer Valley Rita 0308
 #*ALC Big Eye D09N
 GAR Objective 3387

CED	BW	WW	YW	RADG	DMI	YH	SC	DOC	PAP								
+9	+5	+72	+141	+33	+1.84	+4	-.51	+27	+3.94								
CLAW	ANGLE	HP	CEM	MILK	MW	MH	CW	MARB	RE	FAT							
+43	+39	+12.2	+9	+27	+86	+2	+49	+1.41	+1.02	+0.04							
\$M	+69	\$W	+75	\$F	+97	\$G	+90	\$B	+186	\$C	+310	\$AxH	+206	\$AxJ	+189		
CED	BW	WW	YW	DMI	YH	SC	DOC	HP	CEM	MILK	MW	MH	CW	MB	REA	FAT	TEND
36	35	42	8	89	88	99	13	36	55	72	38	81	59	2	7	39	50

NON-PARENT MALES

Top 1% \$G	Top 3% \$AxH	Top 5% REA	Top 15% Doc	Top 25% \$F
Top 1% Marb	Top 3% \$B	Top 10% \$AxJ	Top 15% WW	
Top 2% \$C	Top 3% RADG	Top 10% YW	Top 20% \$W	



Lylester Discovery 662 / A maternal sister to Lot 22 featured in the recent Soaring Eagle Invitational sale.

- BW 73 lbs; Adj WW 603 lbs.
- Duke 653 is a low-birth, carcass and \$C prospect produced by the featured member of the herd sire producing Rita family in the Lylester Ranch program, Discovery 6428 sired by the rare and valuable, Confidence Plus.
- The dam of Lot 22 is a direct daughter of the of the herd sire producing headliner of the Blackstone Cattle Company donor program, Big Eye 1770 sired by the \$110,000 44 Farms and Vintage Angus sire, Discovery.
- Full and maternal siblings to the dam of Lot 22 include: Momentum, the proven Marb. and female sire who was the \$130,000 top-selling bull of the 2014 Gardiner Angus Sale selected by Mayer Ranch; Discovery A-6417, the \$15,000 second high-selling open heifer of a past Blackstone Sale selected by Ledan Acres Cattle Company; Black Granite 7163 selected by Missing S Angus in the 2018 Blackstone Sale; and Black Granite 7166, the lead-off female of that offering selling to Simons Cattle Company.

Lylester Ranch Sale hosted by





The LiveOnline™ format is a live auction, no different from a traditional auction, but takes place online at **www.CCI.live**. You will login and get a buyer number, no different from bidding online at any of our traditional auctions. There will be an auctioneer and you will simply click to bid. The only difference in a LiveOnline™ auction and a traditional auction is that there is not a place of venue or an actual sale location, it all happens online. Like any other sale, you can always visit the farm and view the sale offering prior to sale time.

Of course, you can still participate in the bidding without a computer or mobile device by calling any of the sale staff to place your bid privately or be on the phone at sale time.

GET STARTED

- 1.** Go to www.CCI.live.
- 2.** Login or create a new account (Click on Buyer Login)
- 3.** Go to the sale page for the auction.
- 4.** Click GET BUYER NUMBER and bid with confidence.

TIPS FOR ONLINE BIDDING

- 1.** Make sure you have good internet, preferably with 2 mg upload or more. You can visit www.testmy.net to check your upload speeds. If you are traveling during the auction, pull over or just phone in to bid. Bid early, when the bidding starts, on your lots of interest. By bidding early, we know that you are interested and we will make sure you have every chance to bid.
- 2.** Do not use Internet Explore Version 9 or less. CCI.live is best viewed on Google Chrome, Safari, Firefox and other modern browsers, that are still supported by their operating systems.
- 3.** LiveOnline™ sales, with audio only, are best viewed on your laptop or desktop so that you can enjoy the pre-recorded video of the cattle simultaneously with the auctioneers voice. You can of course still hear the auction and bid on your mobile device.

For more information or assistance signing in for the sale contact CCI.live at 516-366-0734 (text or voice) or email us at schedule@cci.live



355 W. Stagecoach Road
Martell, NE 68404

LYLESTER RANCH LLC

FALL FEMALE SALE

September 28, 2021 • 5 pm CST

VIDEOS OF THE SALE OFFERING
WILL BE AVAILABLE

www.cotton-associates.com



SALE MANAGED BY:



LARRY COTTON	517-294-0777
RYAN COTTON	706-206-8361
MIKE GOTHARD	540-894-1055
JERRY CRENSHAW	703-244-4767
ZACK HILEMAN	540-460-2776

www.cotton-associates.com

Ryan Cotton (706) 206-8361
Larry Cotton (517) 294-0777
Mike Gothard (540) 894-1055

Matt Myers (405) 315-7258
Randy Lathrop (847) 910-4673
Brandon Snider (402) 432-2541

355 W. Stagecoach Road | Martell, NE 68404
(Hwy 77 South and Stage Coach Road and 1 mile West)
Brandon Snider (402) 432-2541 • bsnider@lylesterranch.com
Dan & Patricia Vergith (702) 499-0783 • pvergith@lylesterranch.com